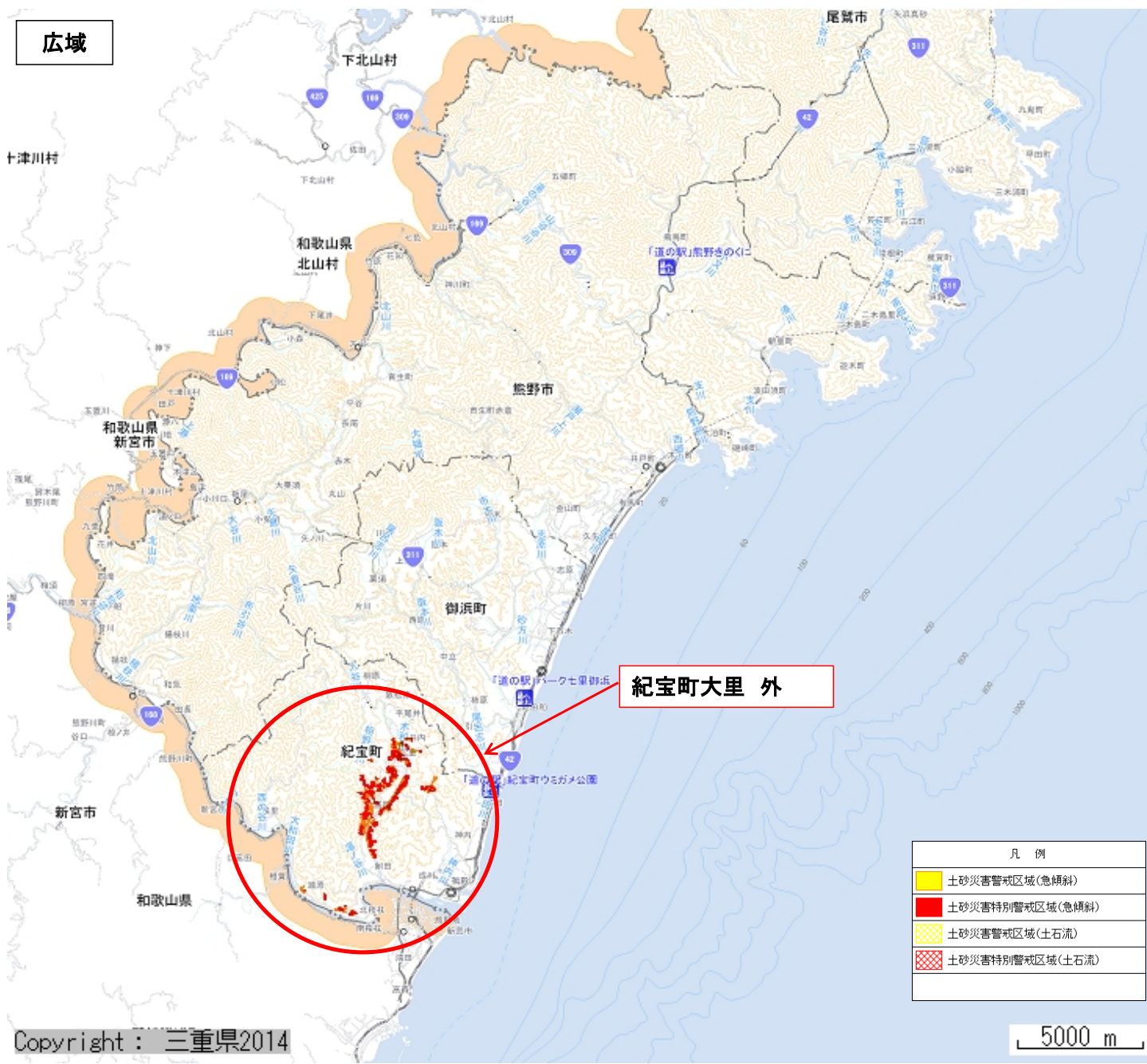






広域

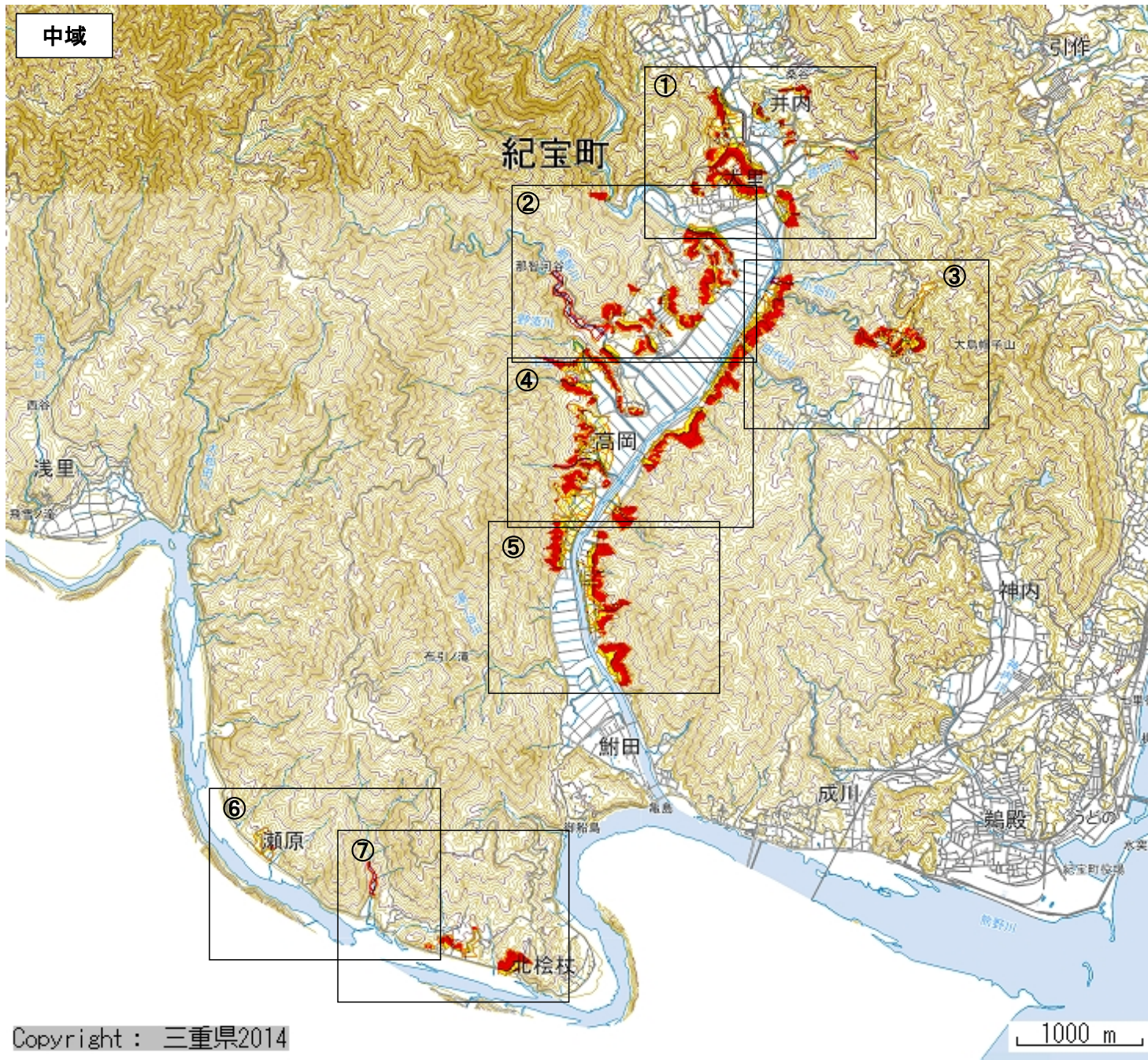


紀宝町大里 外

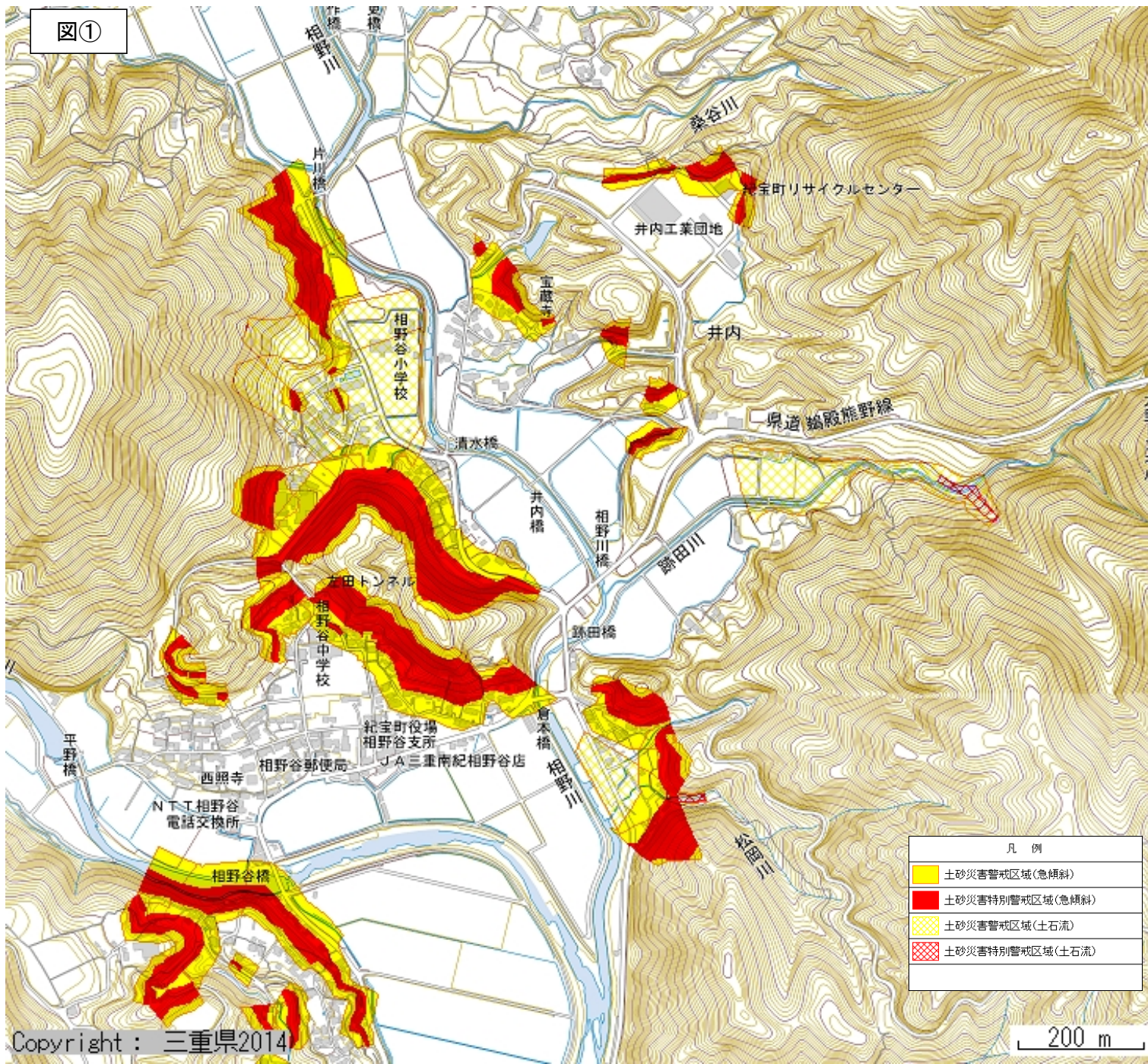
凡 例	
	土砂災害警戒区域(急傾斜)
	土砂災害特別警戒区域(急傾斜)
	土砂災害警戒区域(土石流)
	土砂災害特別警戒区域(土石流)

Copyright : 三重県2014

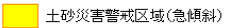
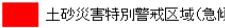

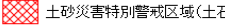
5000 m

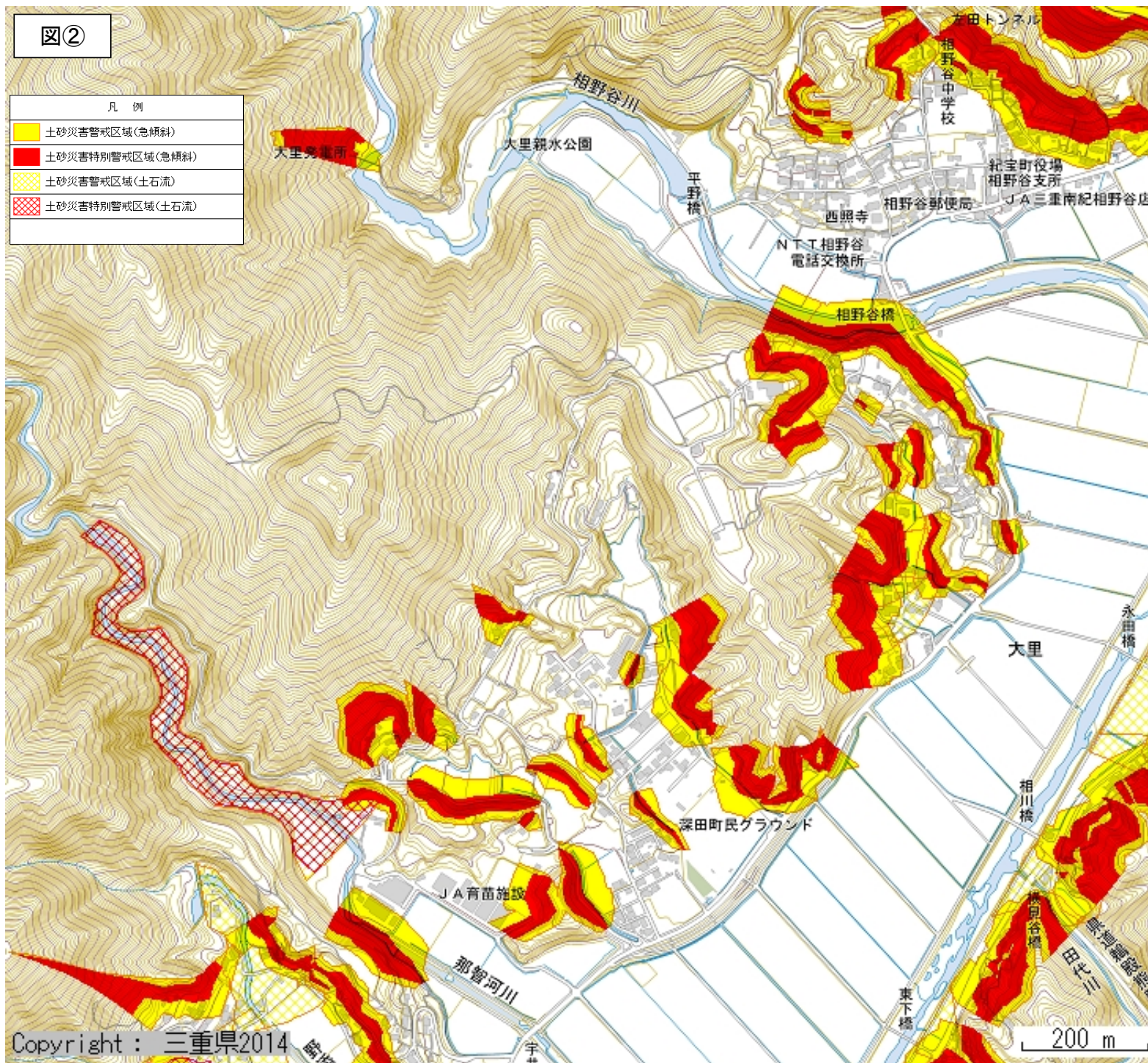


図①

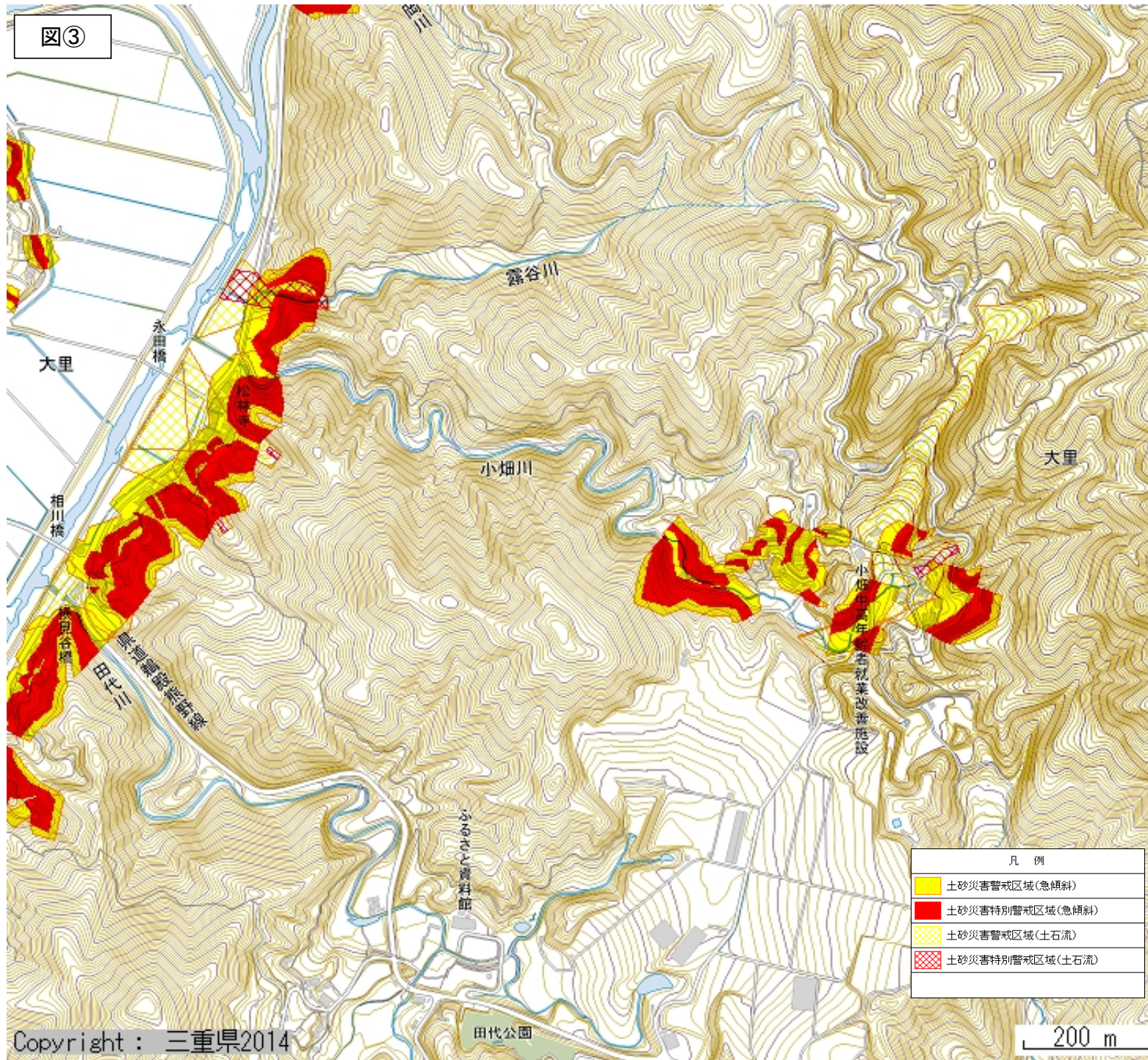


図②

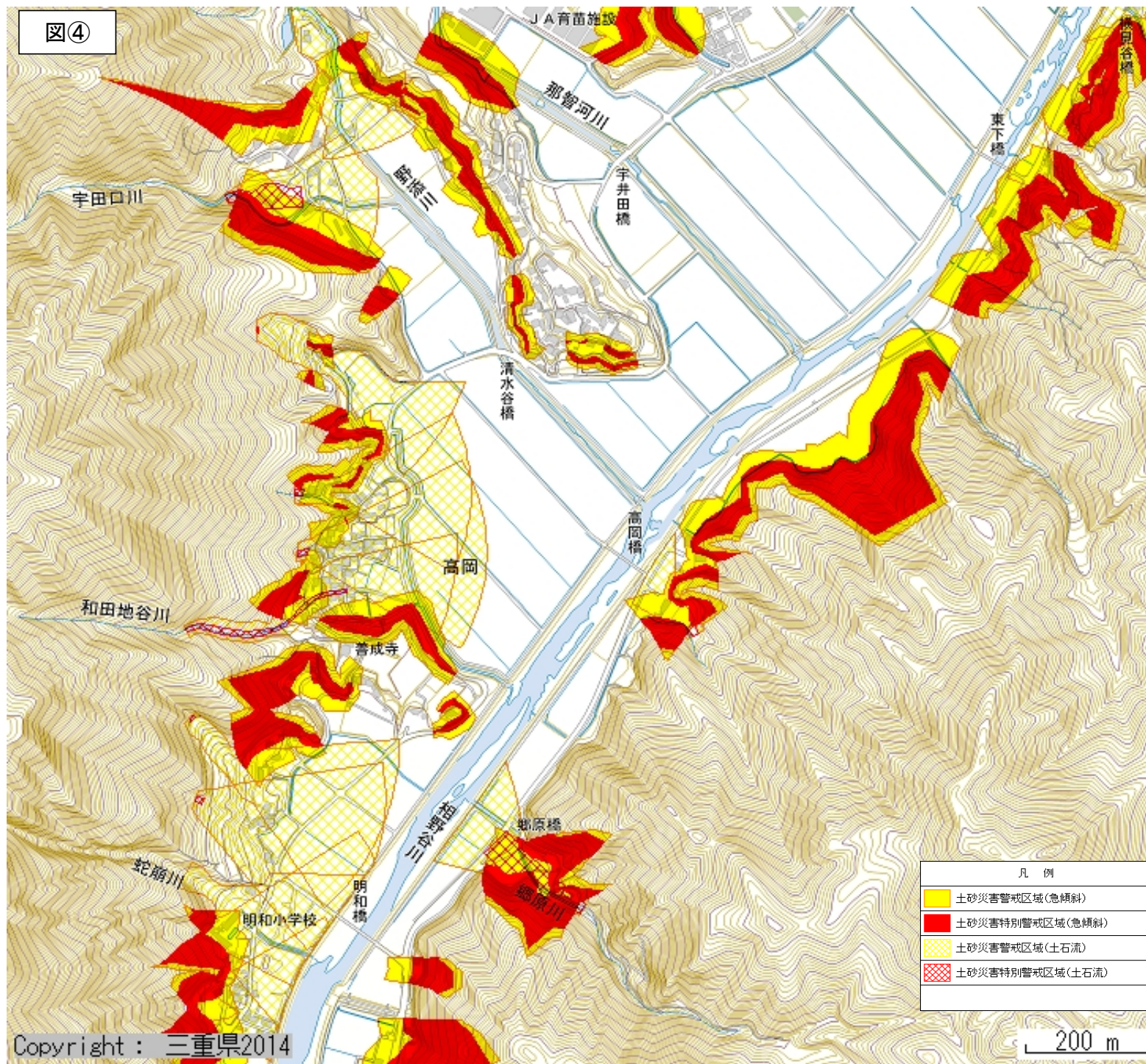
凡例	
	土砂災害警戒区域(急傾斜)
	土砂災害特別警戒区域(急傾斜)
	土砂災害警戒区域(土石流)
	土砂災害特別警戒区域(土石流)



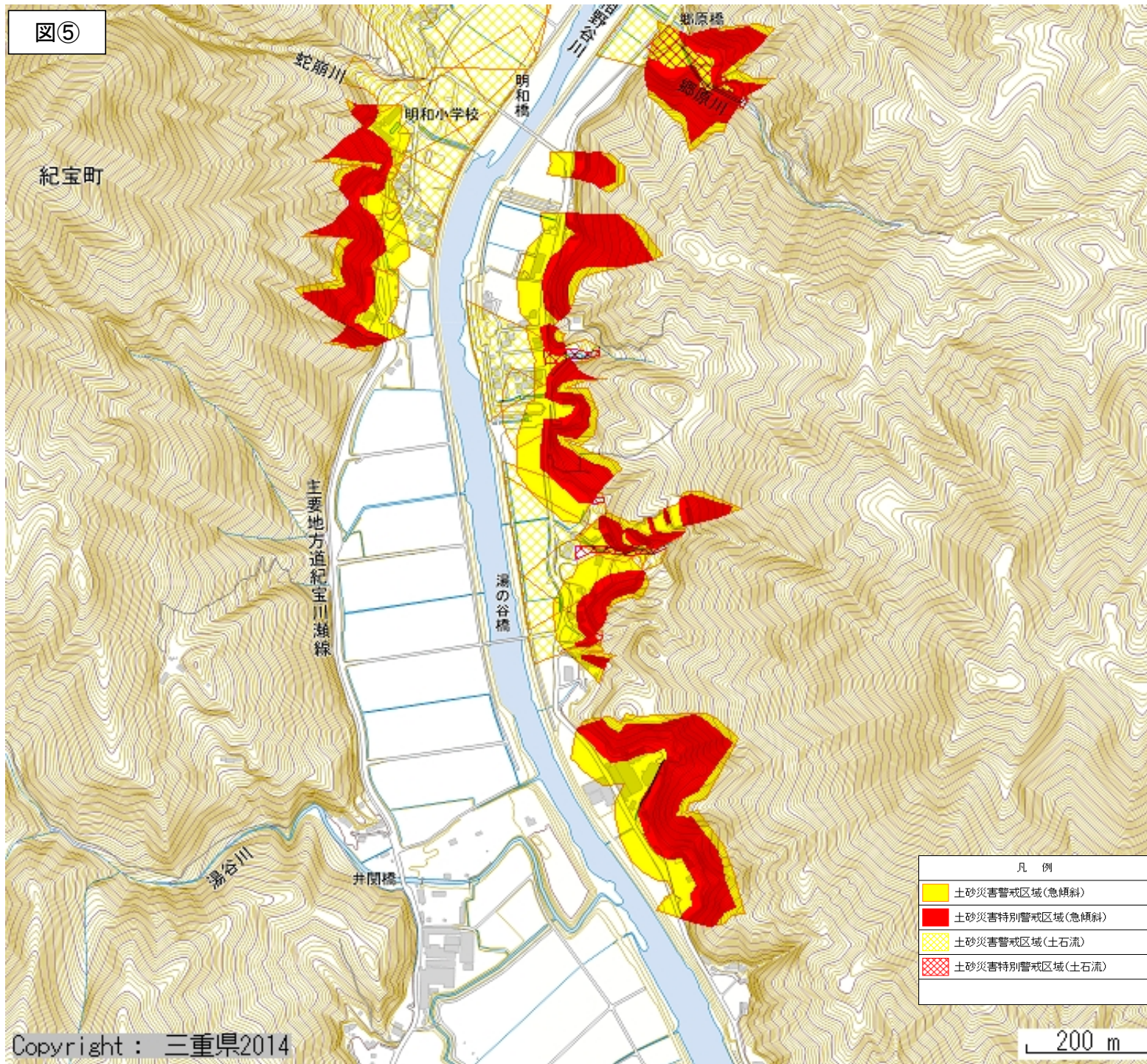
図③



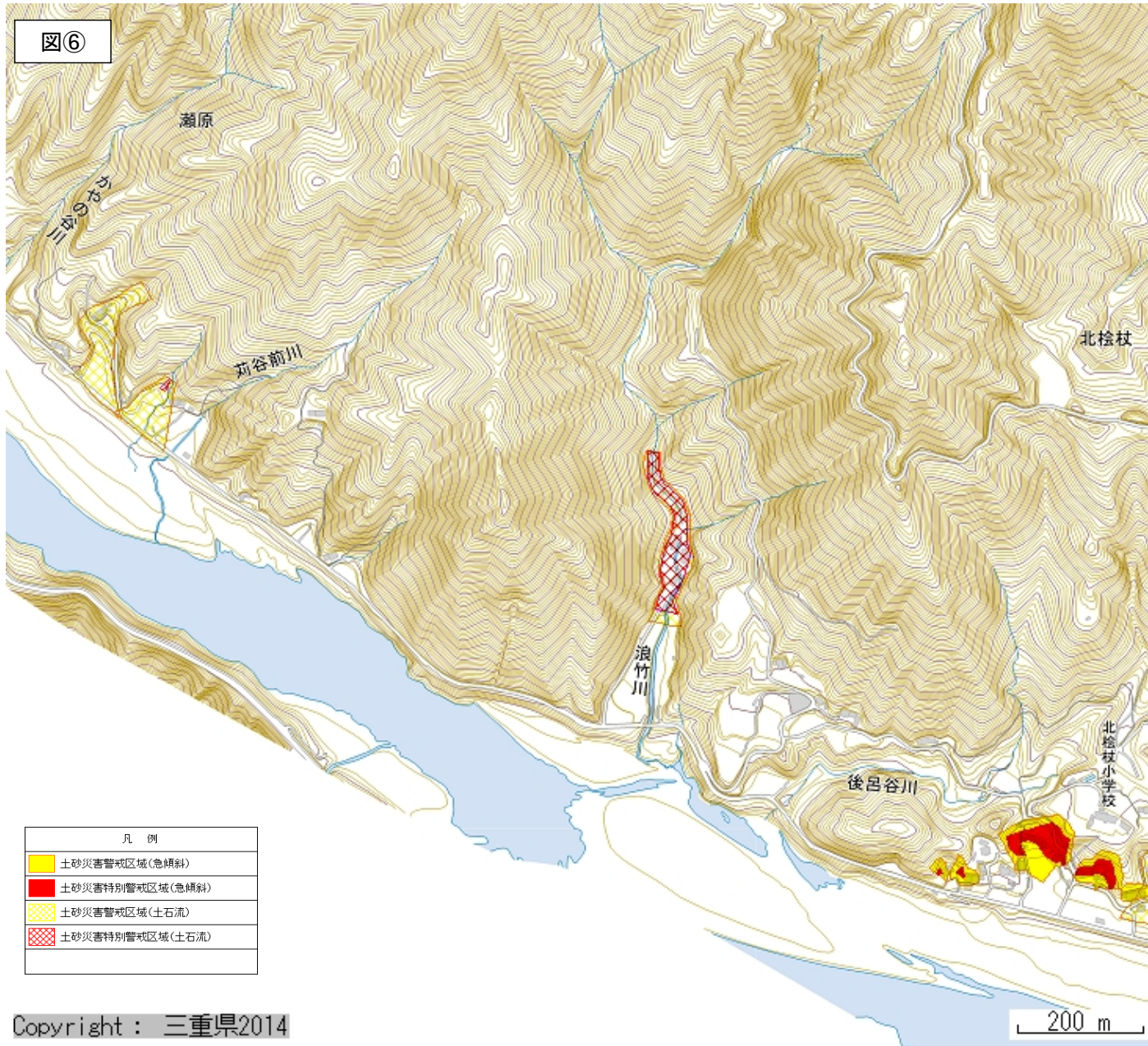
图④



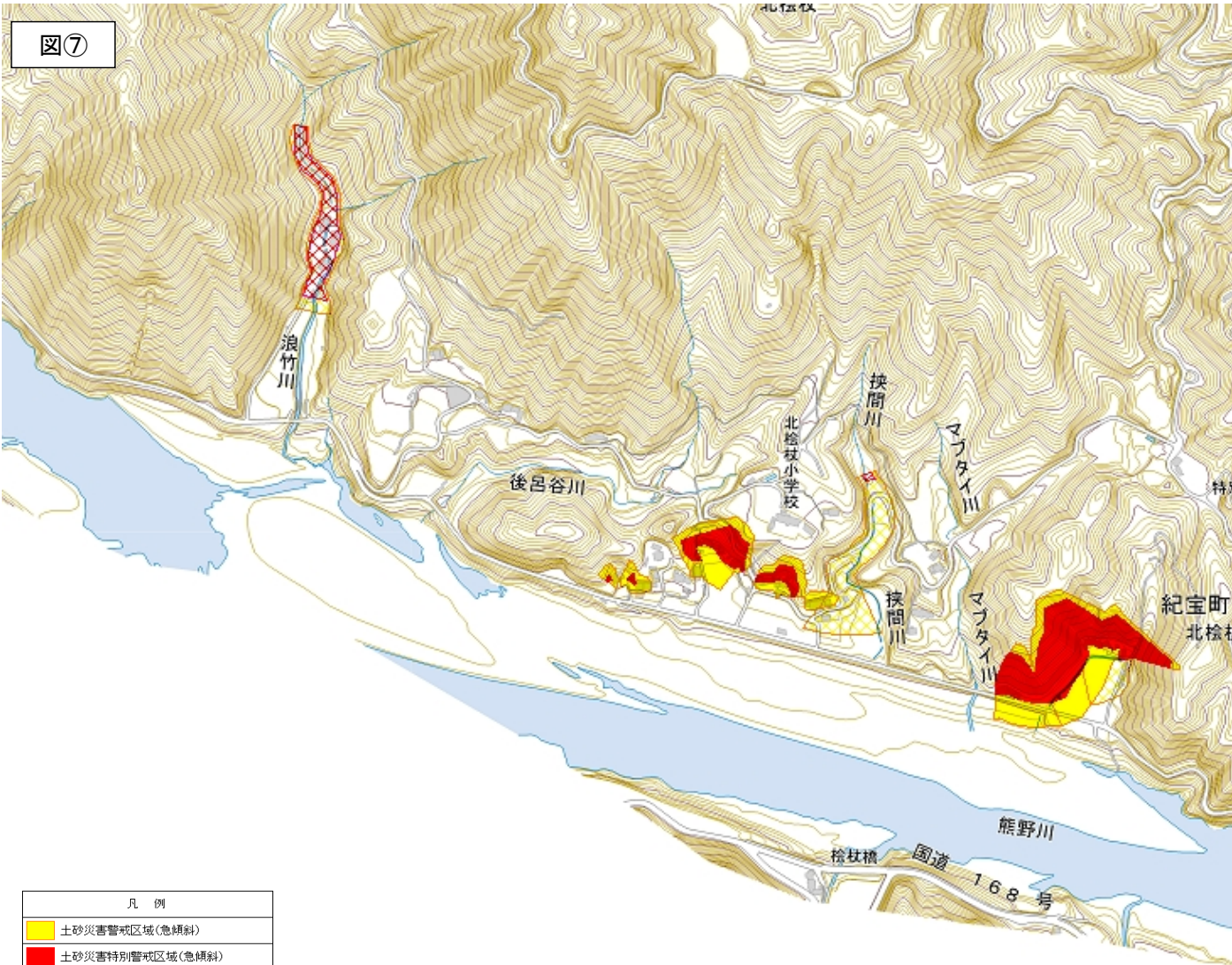
図⑤



図⑥



凡 例	
■	土砂災害警戒区域(急傾斜)
■	土砂災害特別警戒区域(急傾斜)
■	土砂災害警戒区域(土石流)
■	土砂災害特別警戒区域(土石流)



図⑦

凡 例	
	土砂災害警戒区域(急傾斜)
	土砂災害特別警戒区域(急傾斜)
	土砂災害警戒区域(土石流)
	土砂災害特別警戒区域(土石流)