

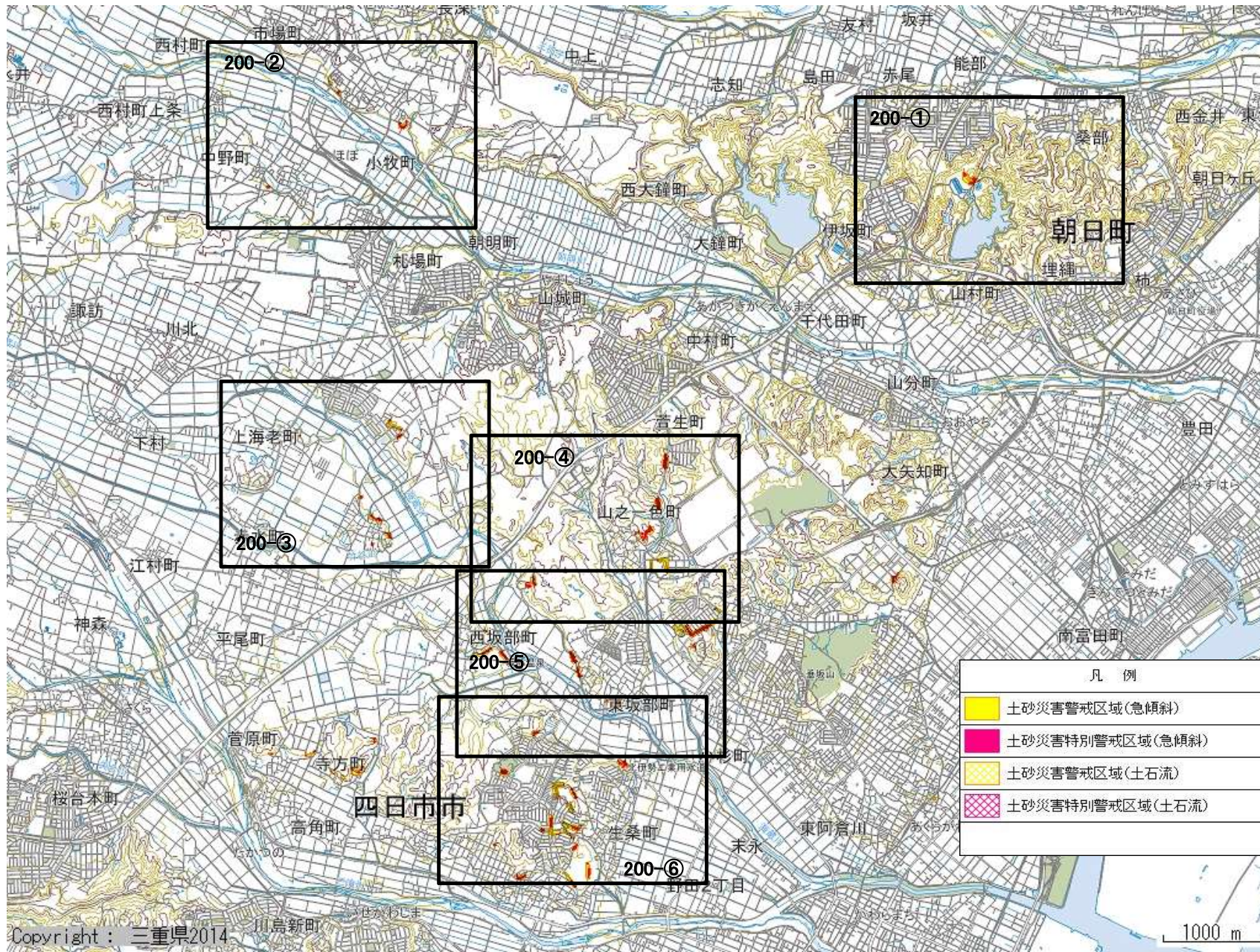
四日市市三重地区、県地区、神前地区、常盤地区、  
保々地区、羽津地区、小山田地区、八郷地区

1000-①

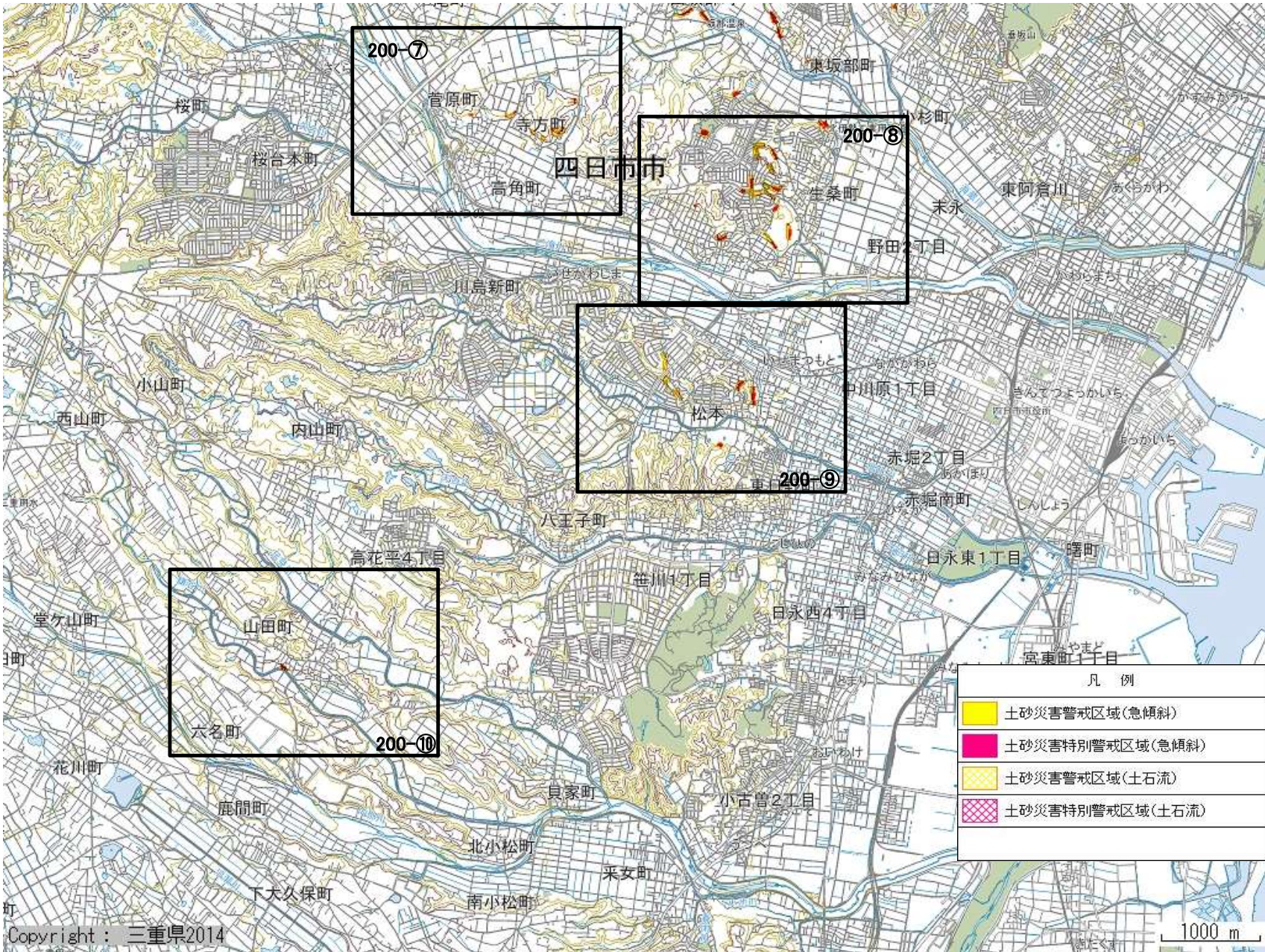
1000-②

凡 例	
	土砂災害警戒区域(急傾斜)
	土砂災害特別警戒区域(急傾斜)
	土砂災害警戒区域(土石流)
	土砂災害特別警戒区域(土石流)











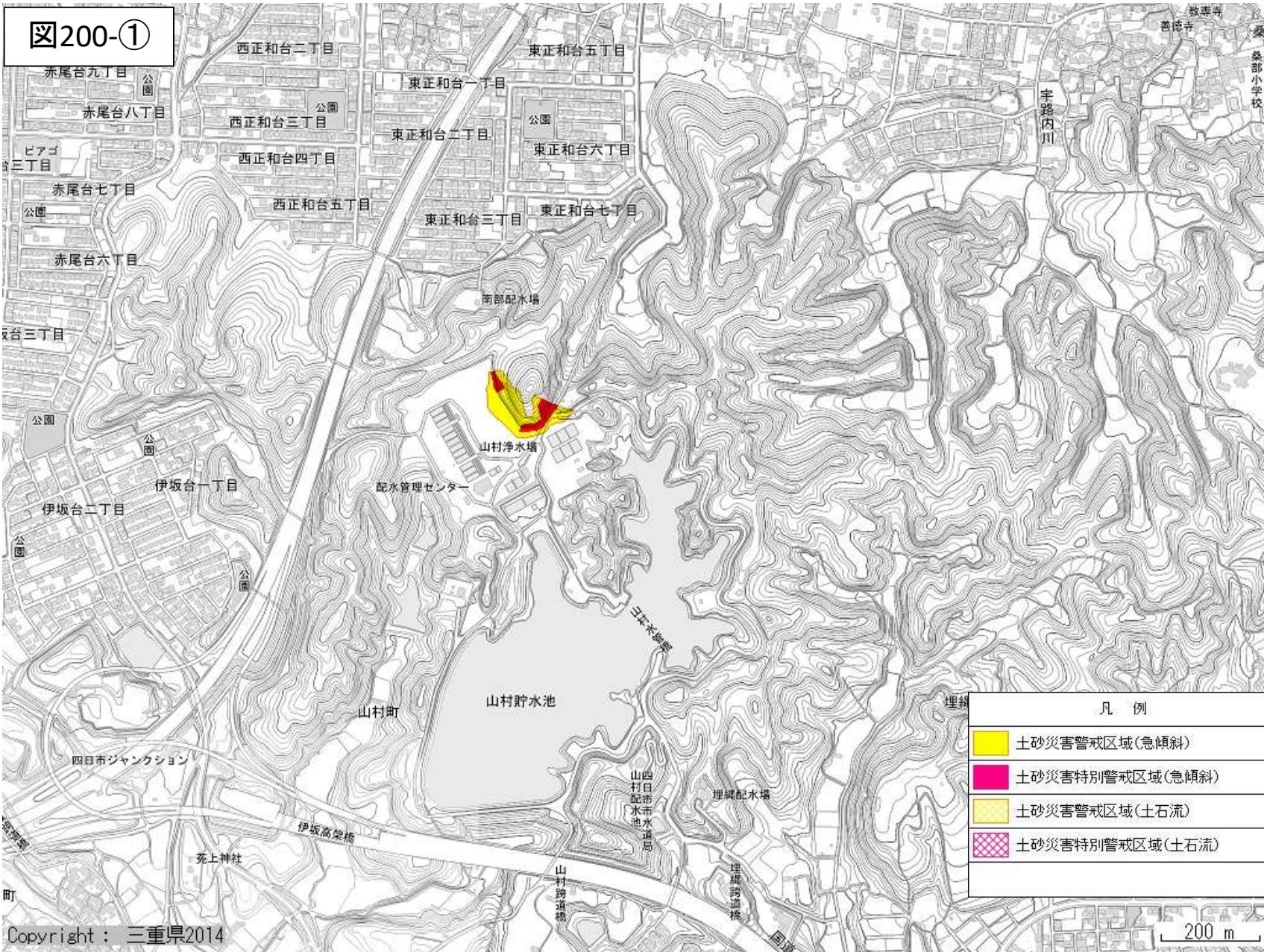


図200-①





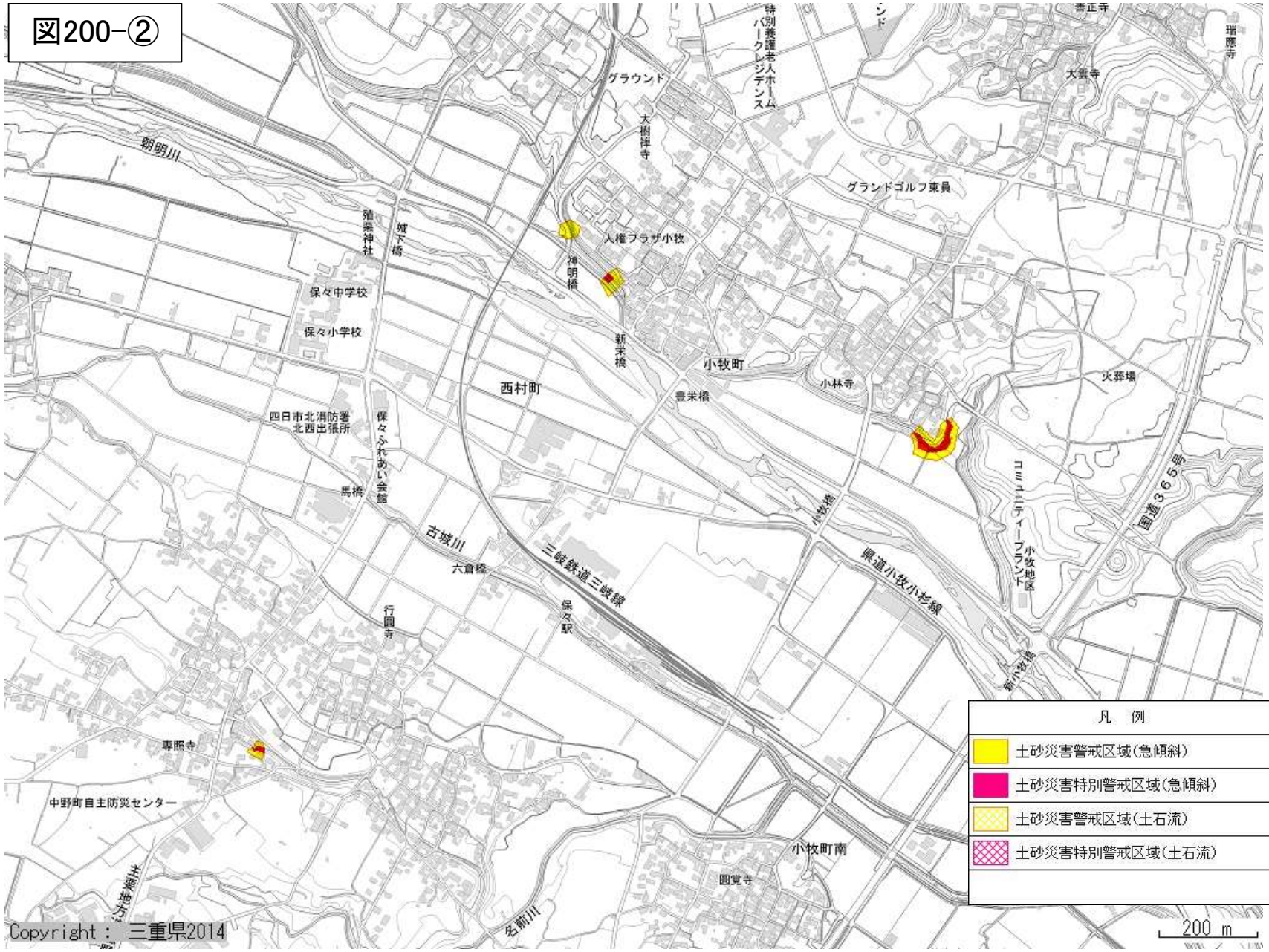
凡 例	
	土砂災害警戒区域(急傾斜)
	土砂災害特別警戒区域(急傾斜)
	土砂災害警戒区域(土石流)
	土砂災害特別警戒区域(土石流)



図200-②





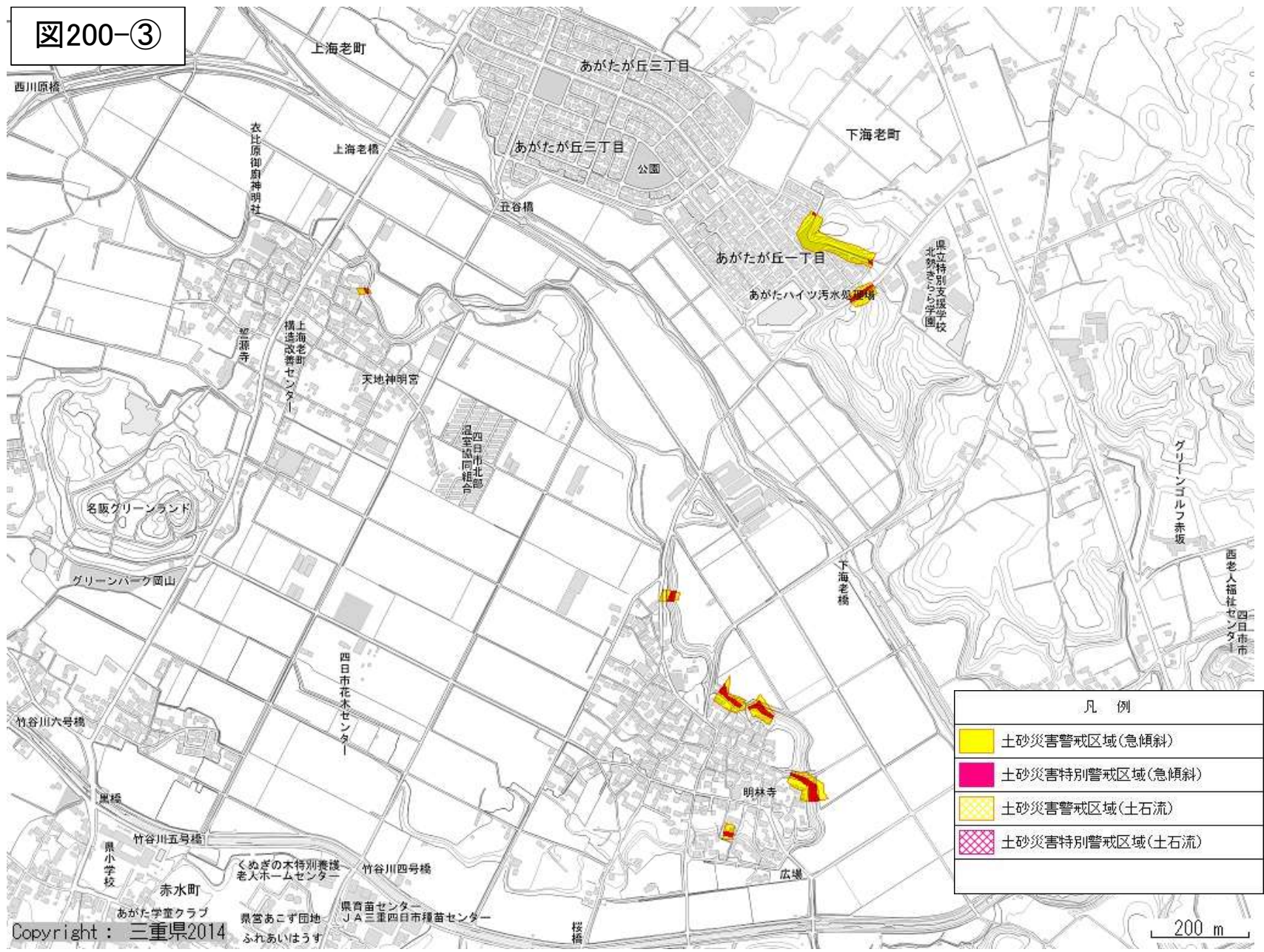
凡 例	
	土砂災害警戒区域(急傾斜)
	土砂災害特別警戒区域(急傾斜)
	土砂災害警戒区域(土石流)
	土砂災害特別警戒区域(土石流)



図200-③







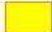



凡 例	
	土砂災害警戒区域(急傾斜)
	土砂災害特別警戒区域(急傾斜)
	土砂災害警戒区域(土石流)
	土砂災害特別警戒区域(土石流)



図200-④

凡 例	
	土砂災害警戒区域(急傾斜)
	土砂災害特別警戒区域(急傾斜)
	土砂災害警戒区域(土石流)
	土砂災害特別警戒区域(土石流)

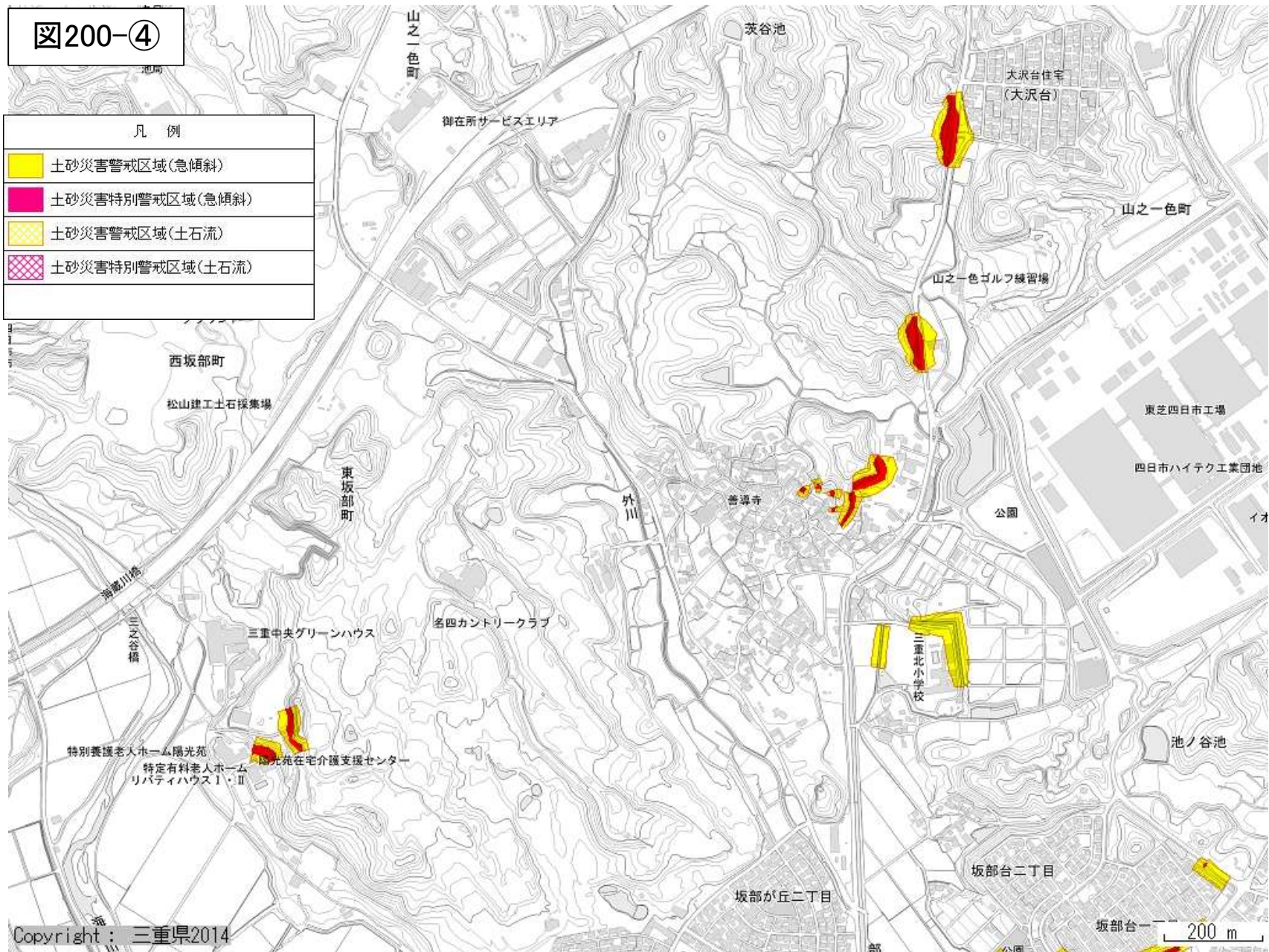




図200-⑤

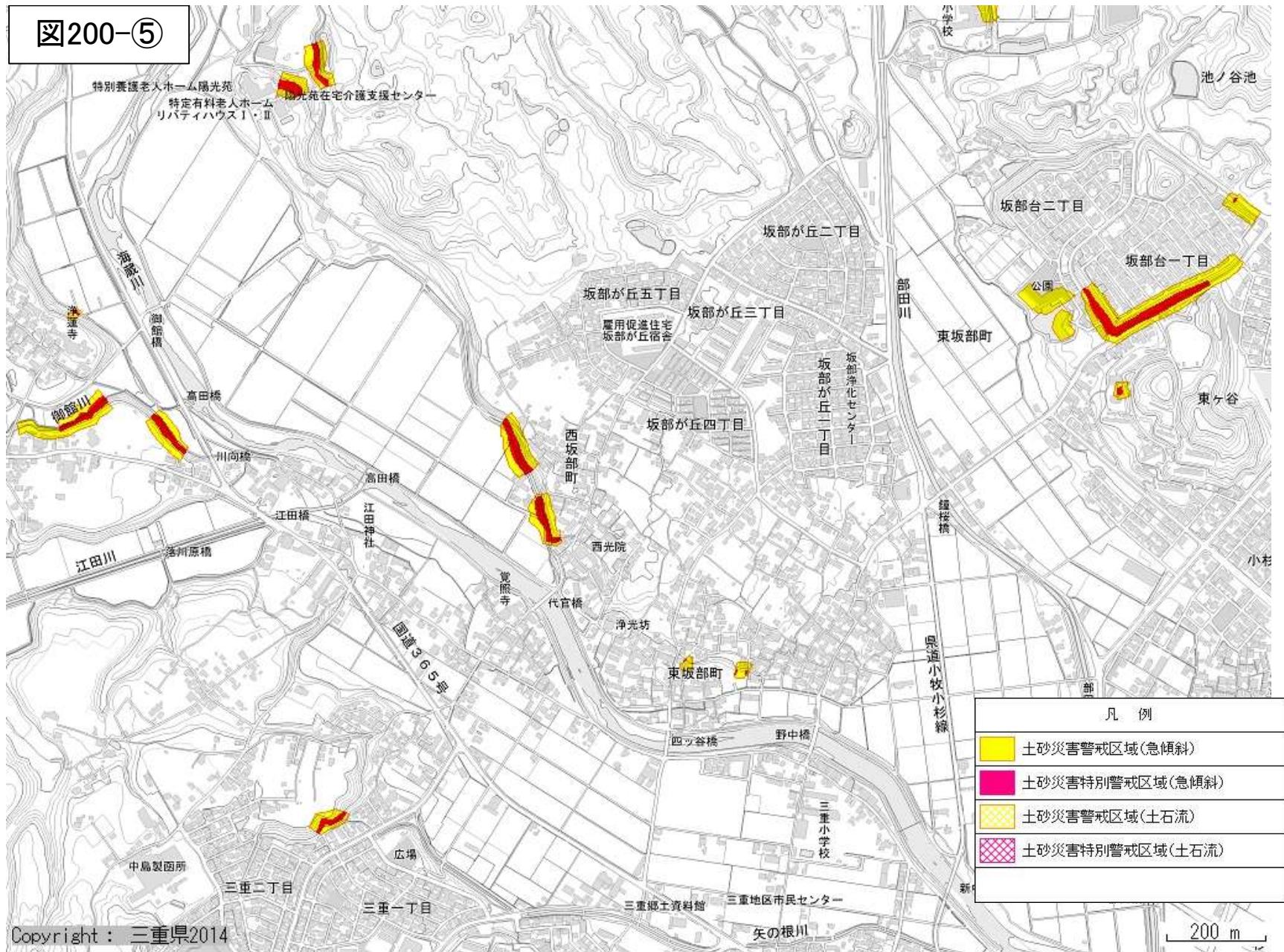




図200-⑥

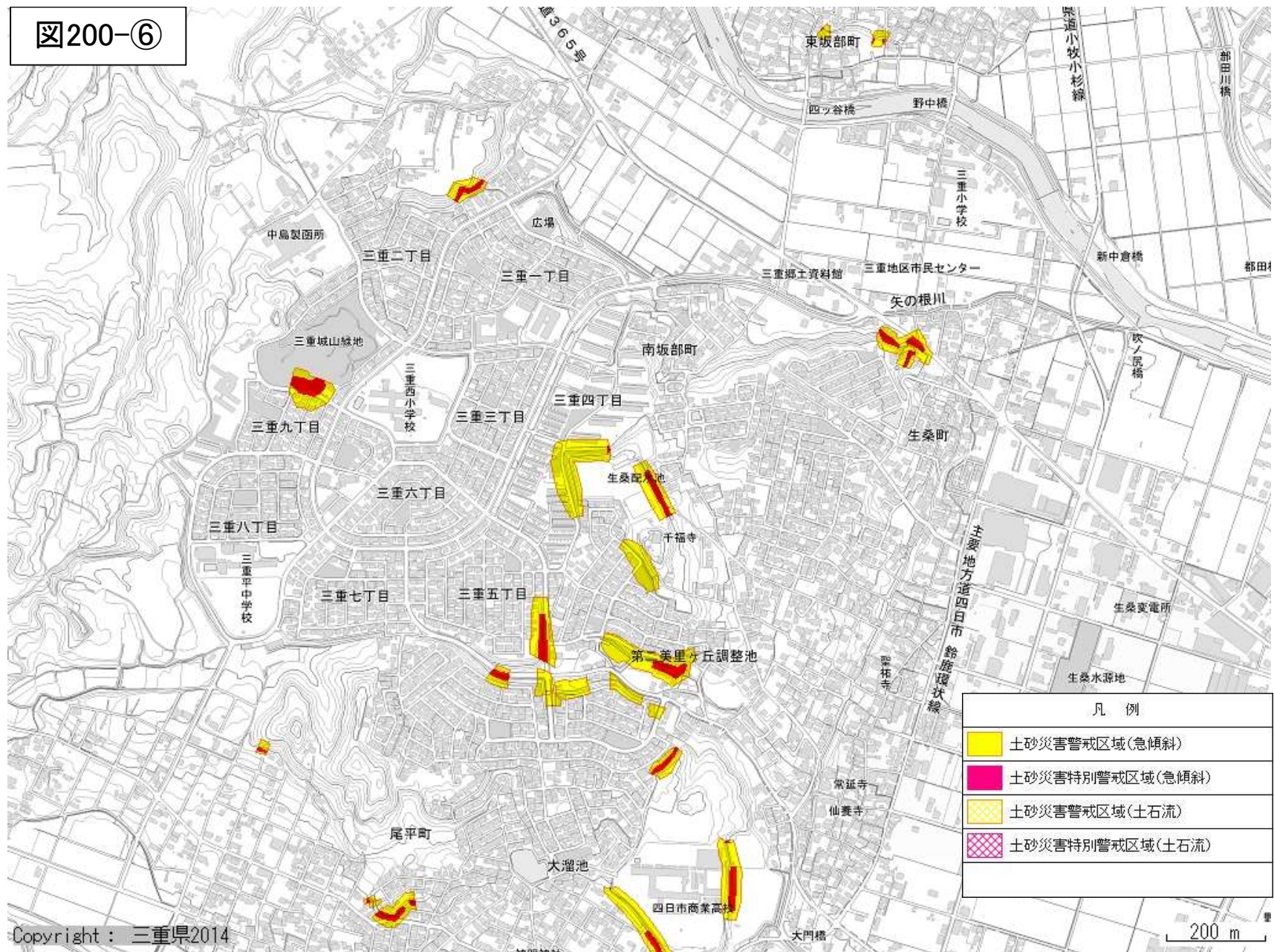




図200-⑦

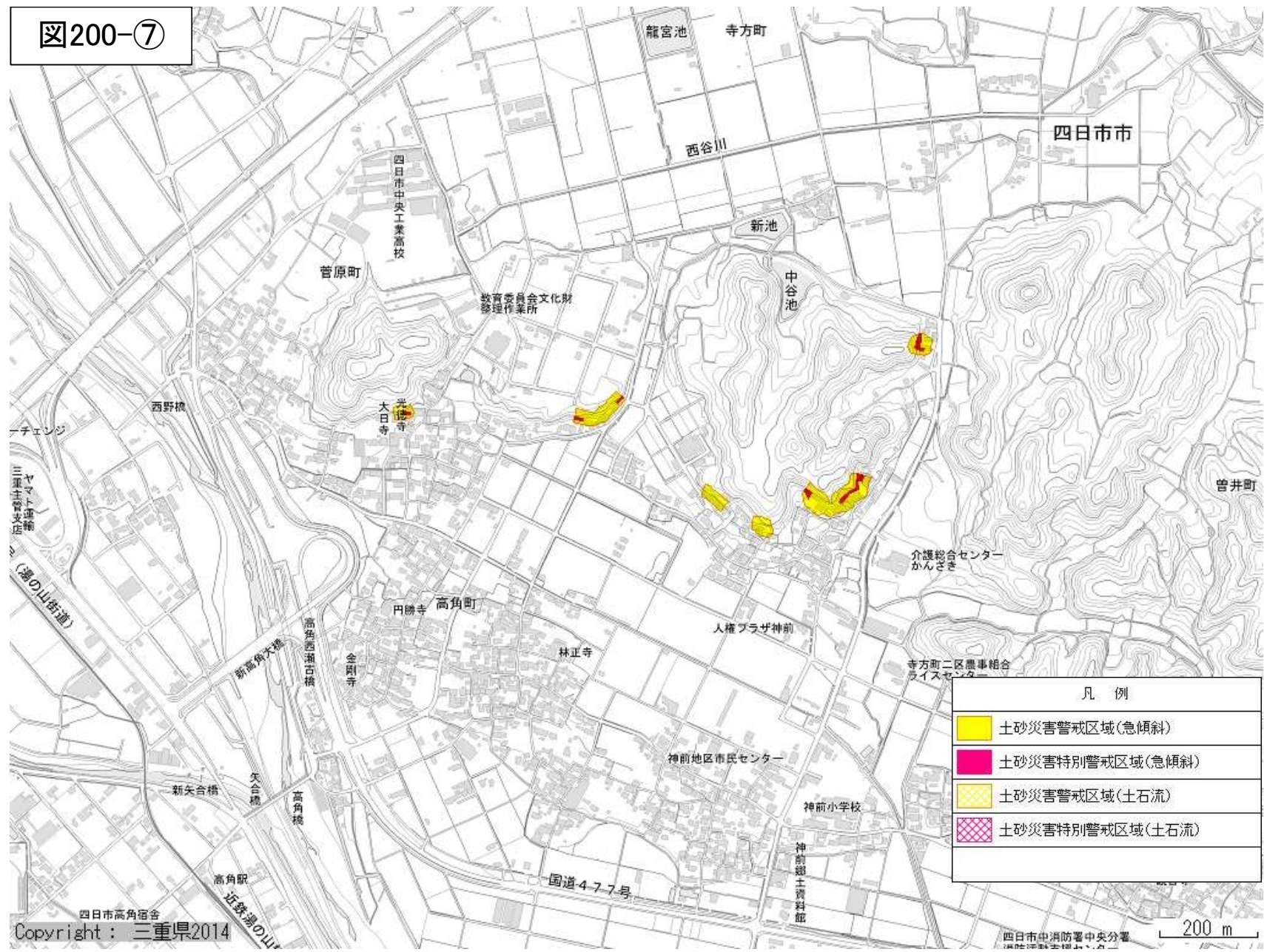




図200-⑧

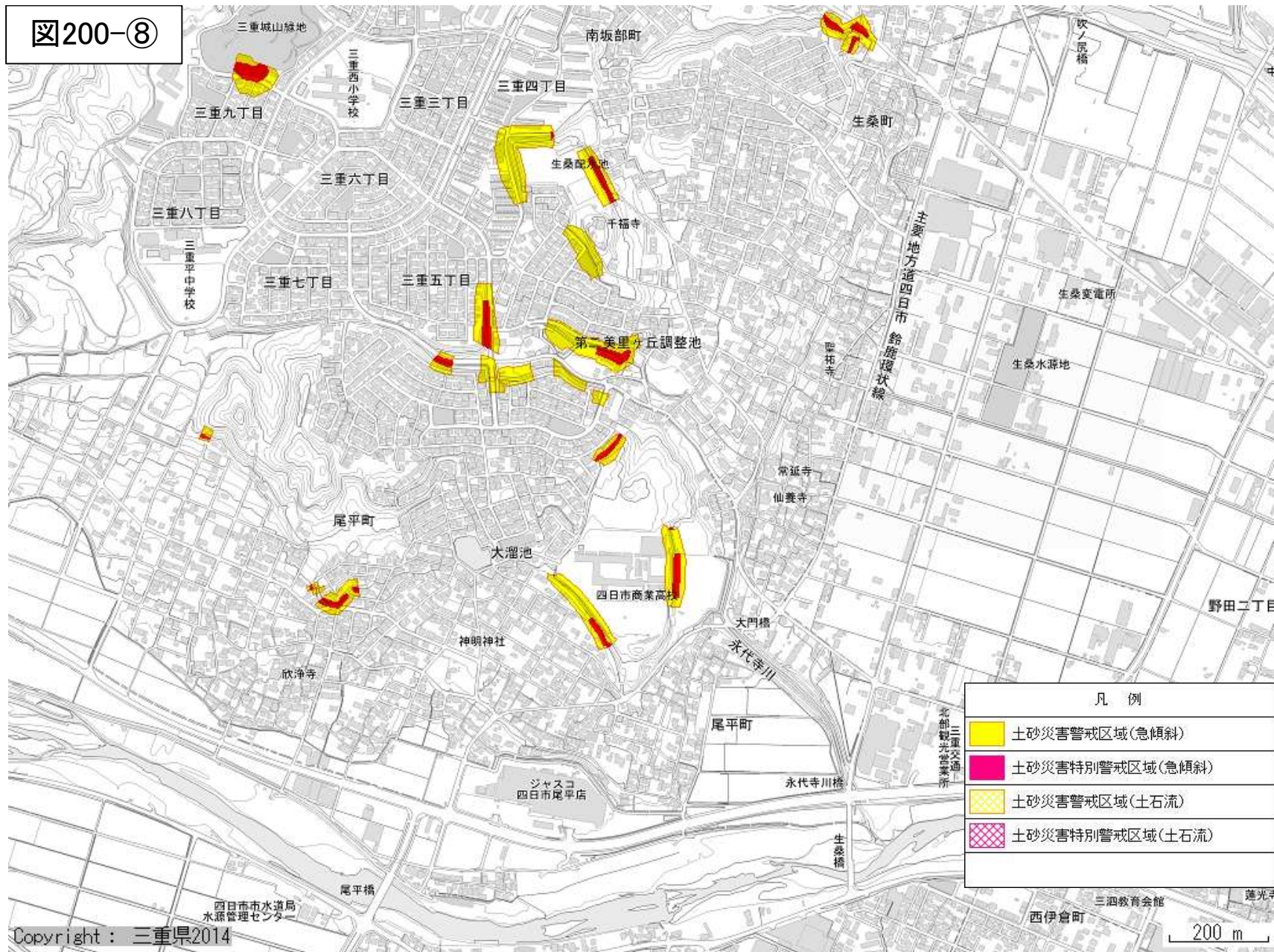
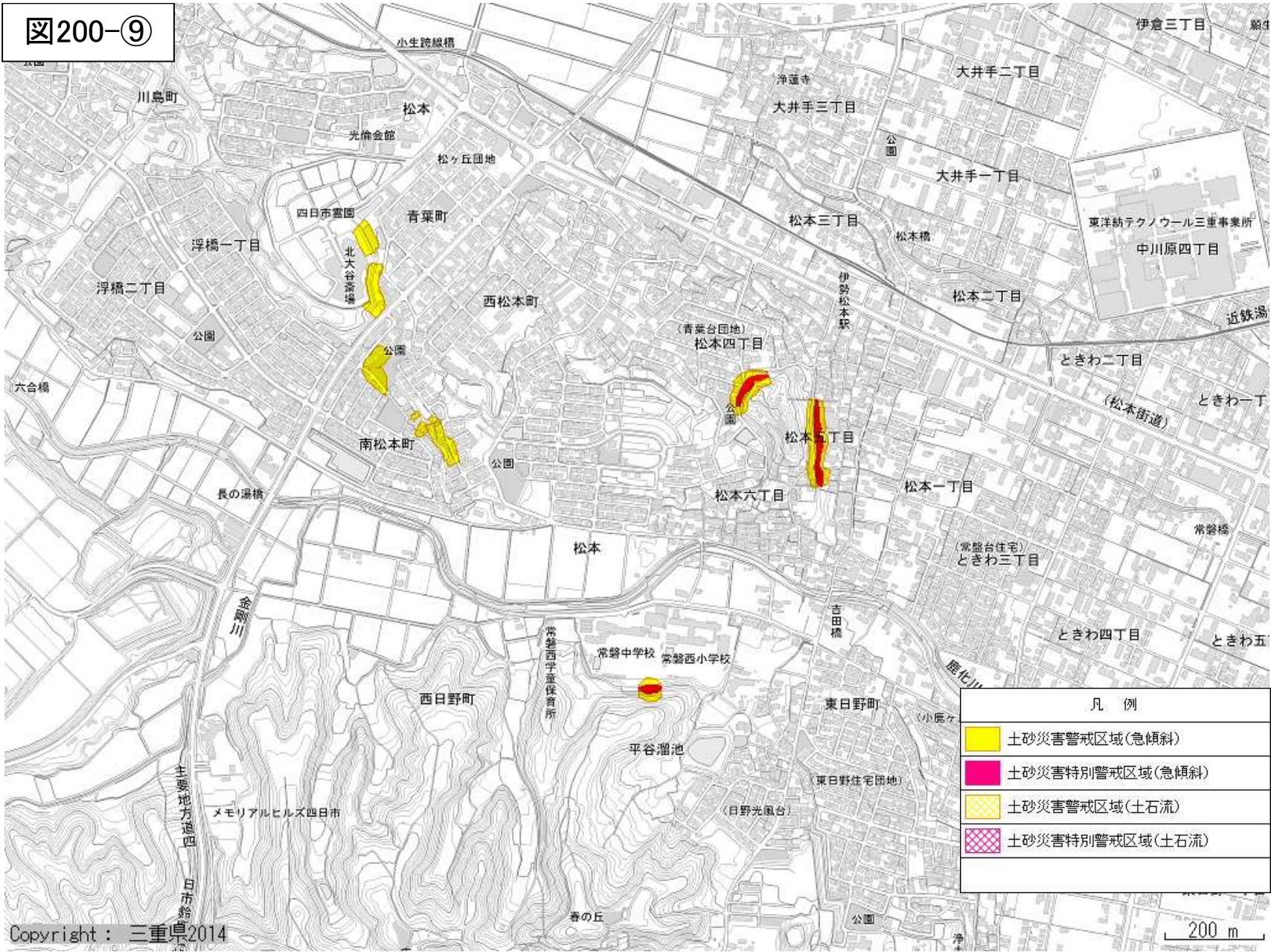




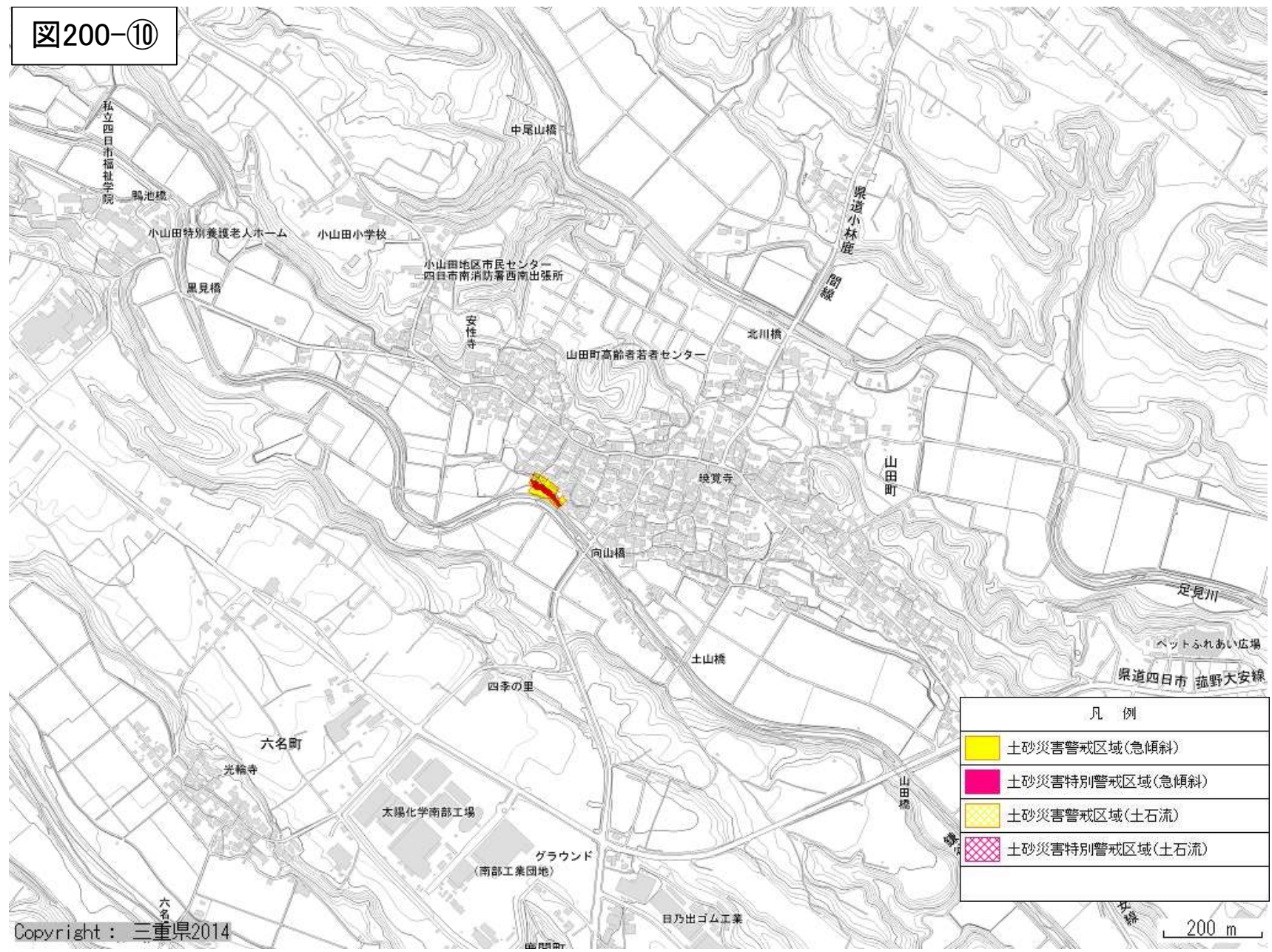
図200-⑨







凡 例	
	土砂災害警戒区域(急傾斜)
	土砂災害特別警戒区域(急傾斜)
	土砂災害警戒区域(土石流)
	土砂災害特別警戒区域(土石流)



図200-⑩



凡例	
	土砂災害警戒区域(急傾斜)
	土砂災害特別警戒区域(急傾斜)
	土砂災害警戒区域(土石流)
	土砂災害特別警戒区域(土石流)