



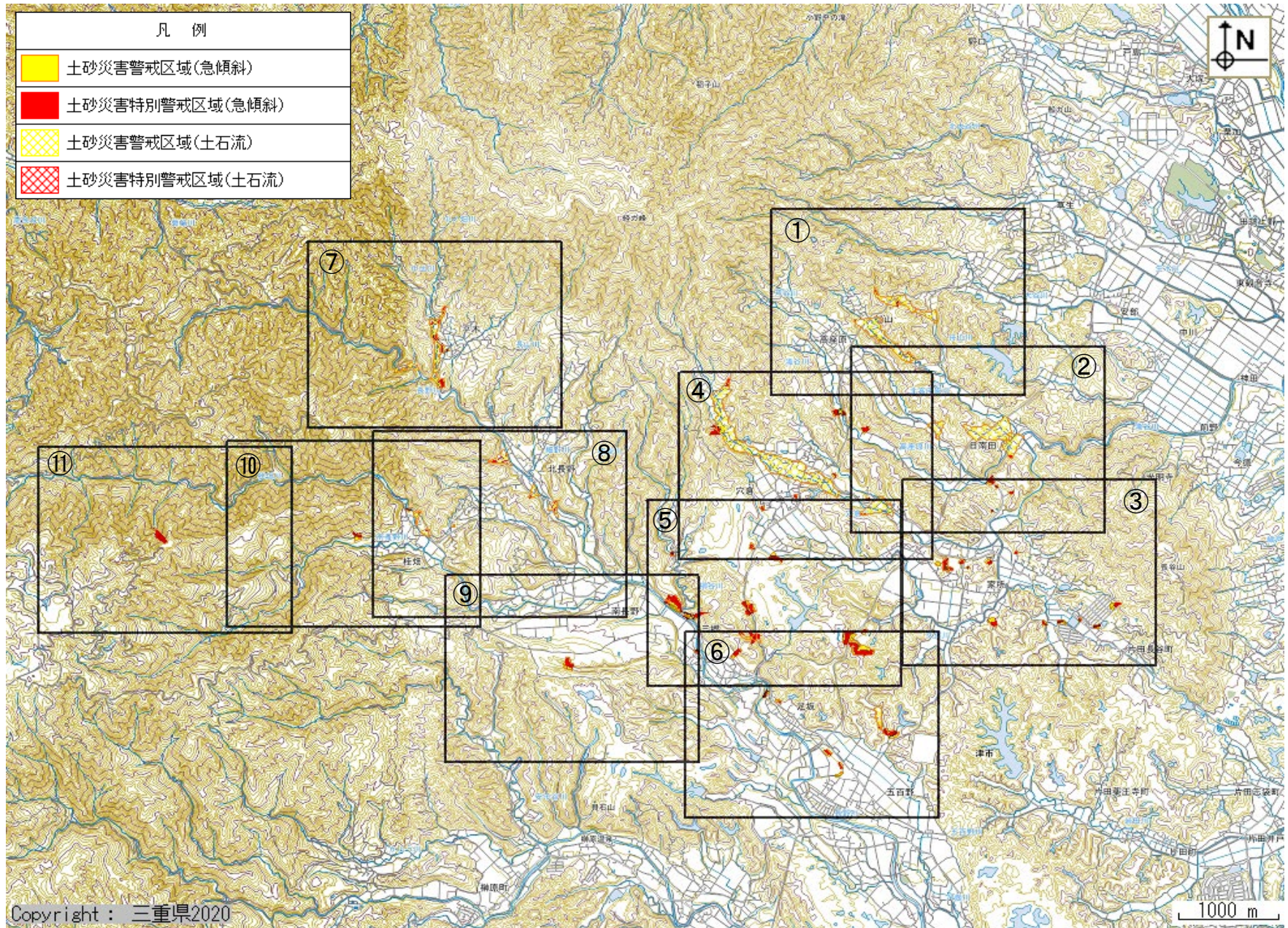
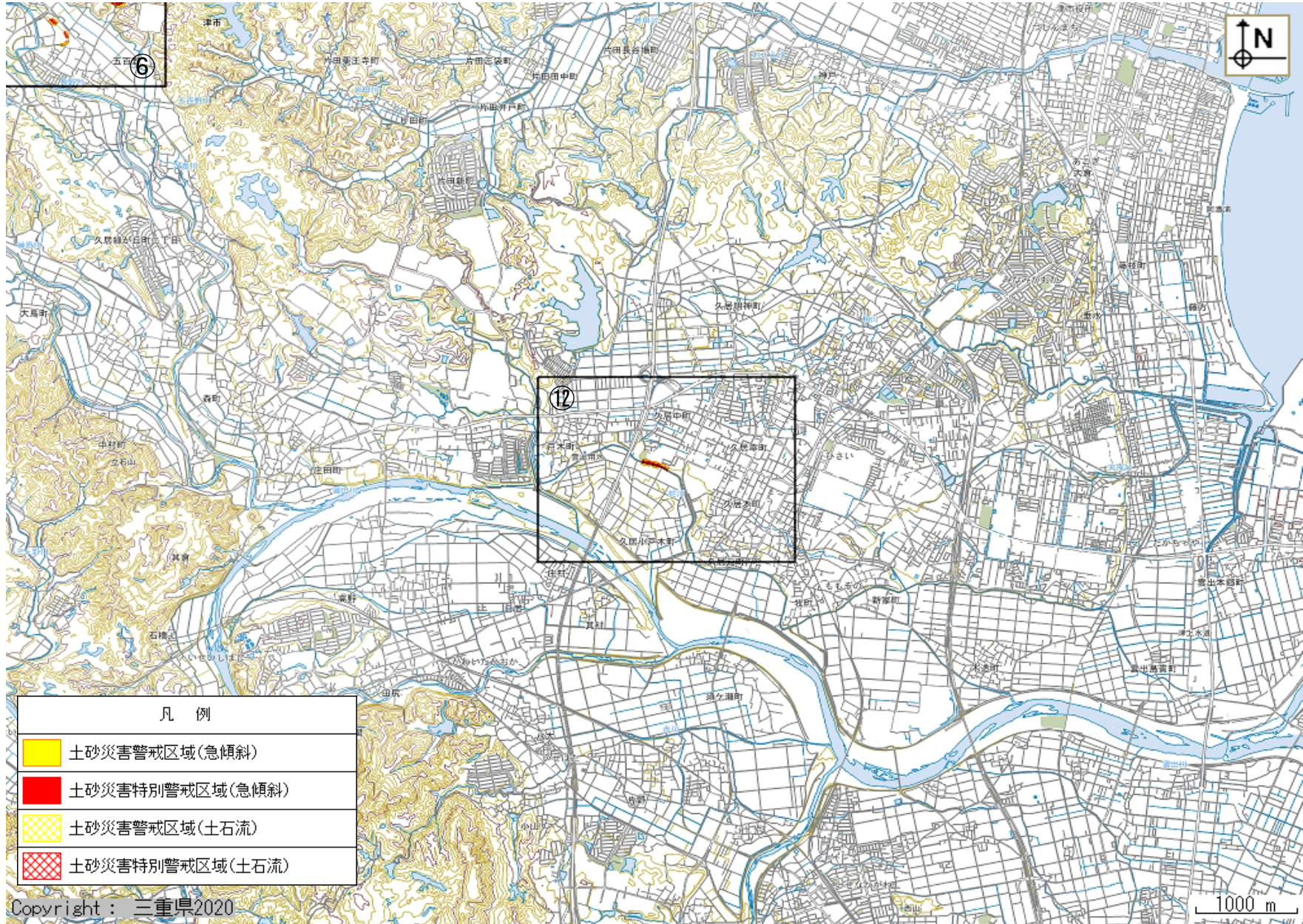






Copyright : 三重県2020

凡 例	
	土砂災害警戒区域(急傾斜)
	土砂災害特別警戒区域(急傾斜)
	土砂災害警戒区域(土石流)
	土砂災害特別警戒区域(土石流)

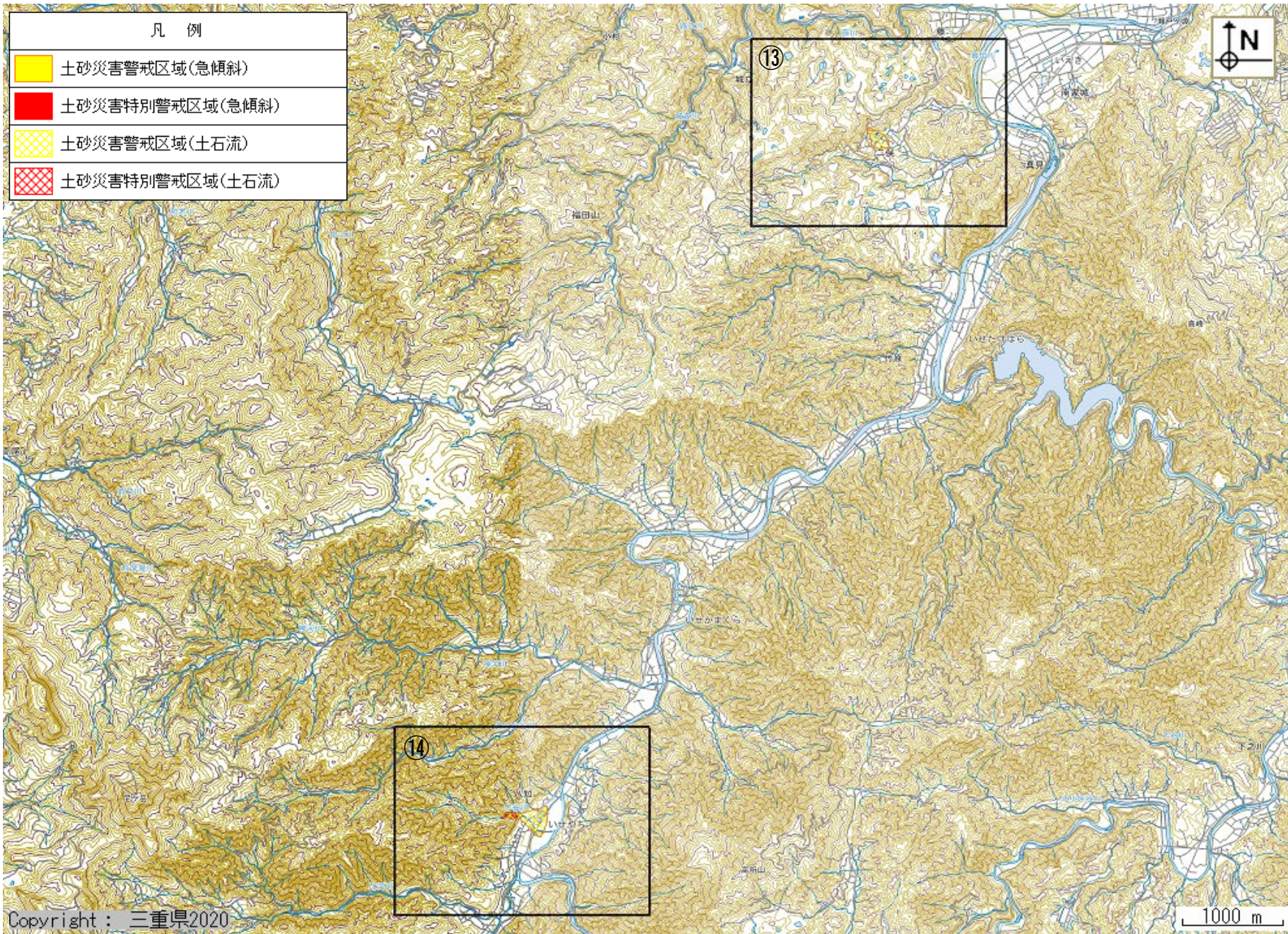




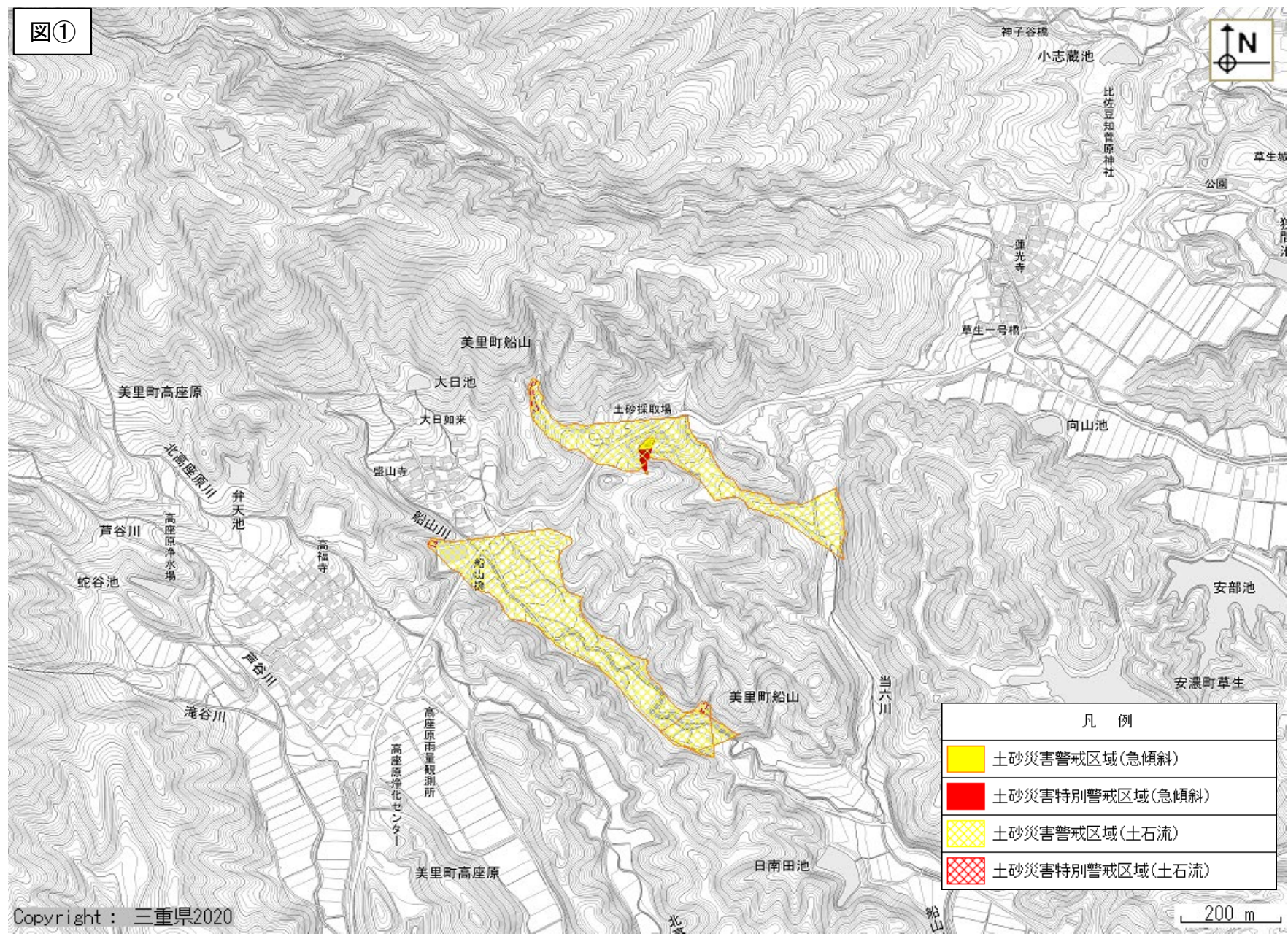
凡例	
	土砂災害警戒区域(急傾斜)
	土砂災害特別警戒区域(急傾斜)
	土砂災害警戒区域(土石流)
	土砂災害特別警戒区域(土石流)

Copyright : 三重県2020

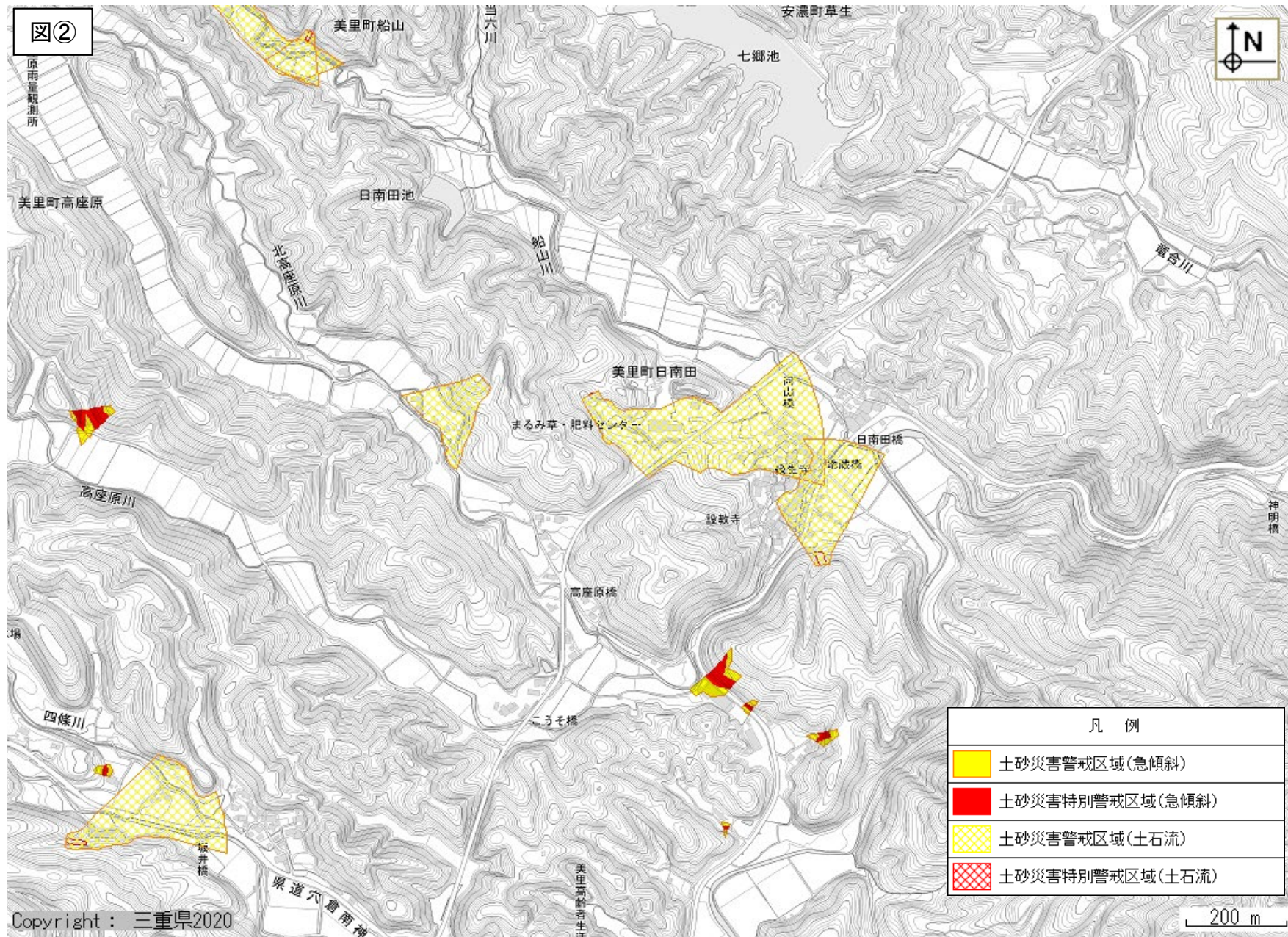
1000 m



図①







凡 例	
■ (Yellow)	土砂災害警戒区域(急傾斜)
■ (Red)	土砂災害特別警戒区域(急傾斜)
■ (Yellow with grid)	土砂災害警戒区域(土石流)
■ (Red with grid)	土砂災害特別警戒区域(土石流)



図②



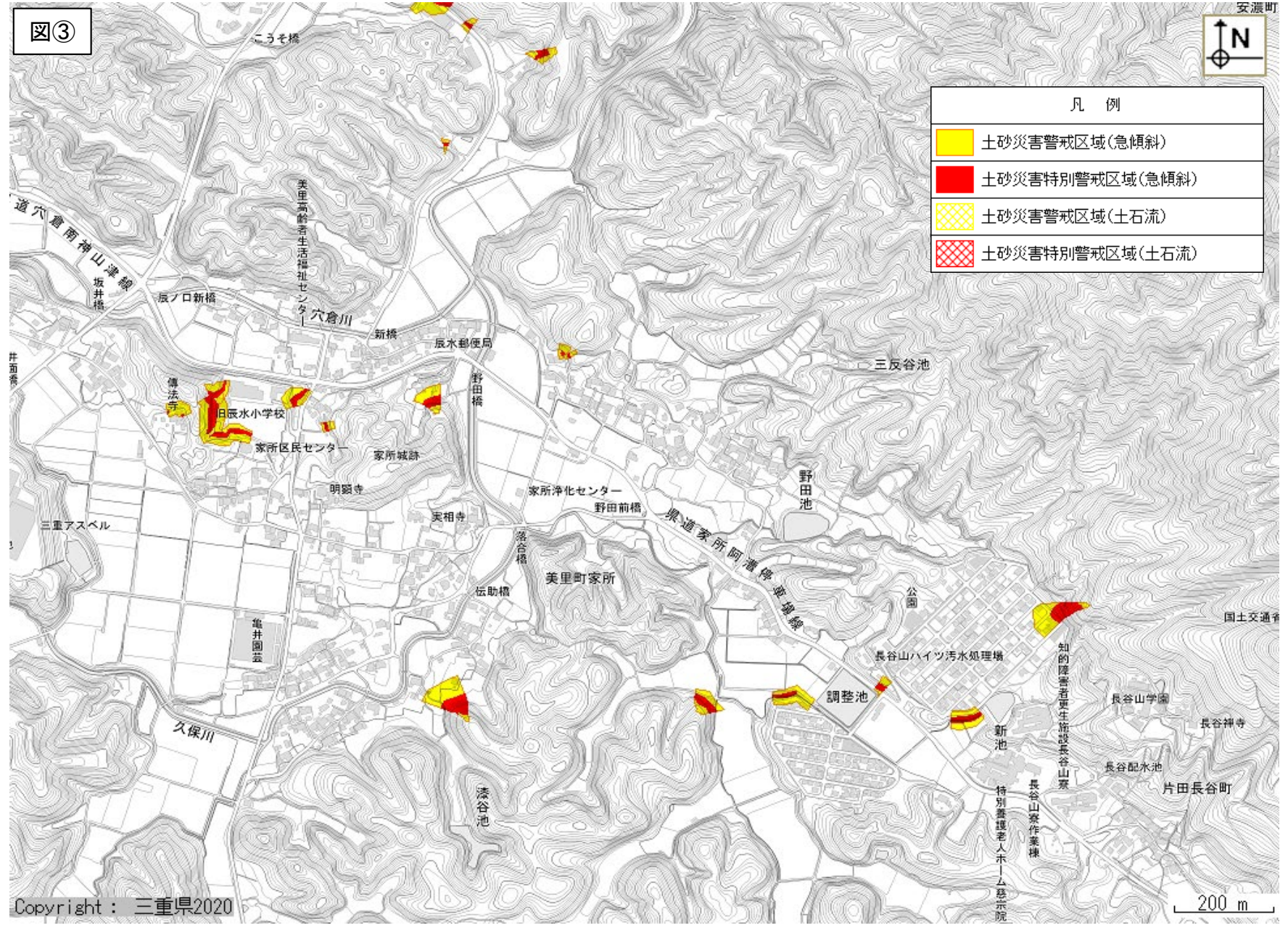
凡 例	
	土砂災害警戒区域(急傾斜)
	土砂災害特別警戒区域(急傾斜)
	土砂災害警戒区域(土石流)
	土砂災害特別警戒区域(土石流)

200 m

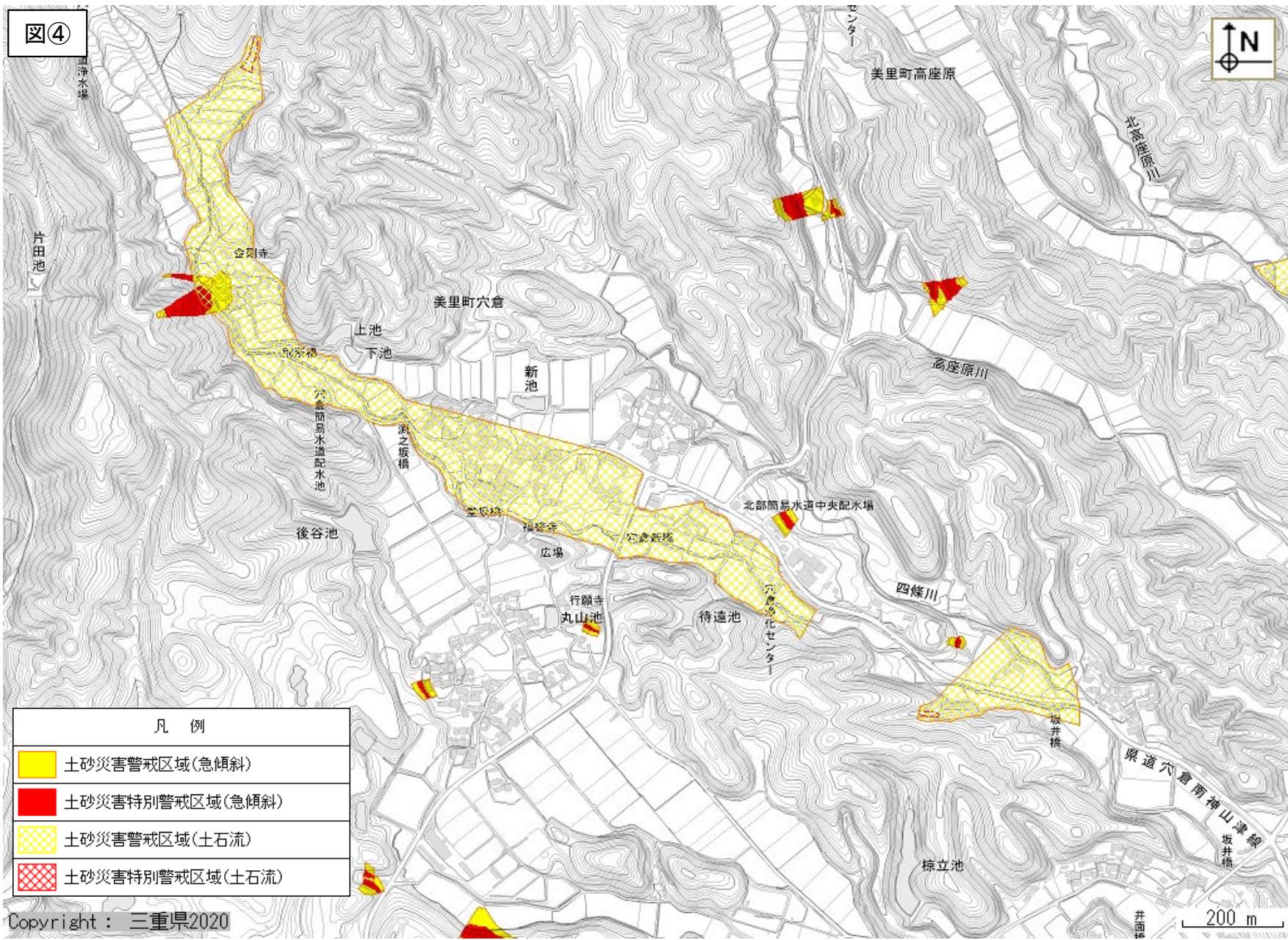
図③



凡例	
	土砂災害警戒区域(急傾斜)
	土砂災害特別警戒区域(急傾斜)
	土砂災害警戒区域(土石流)
	土砂災害特別警戒区域(土石流)







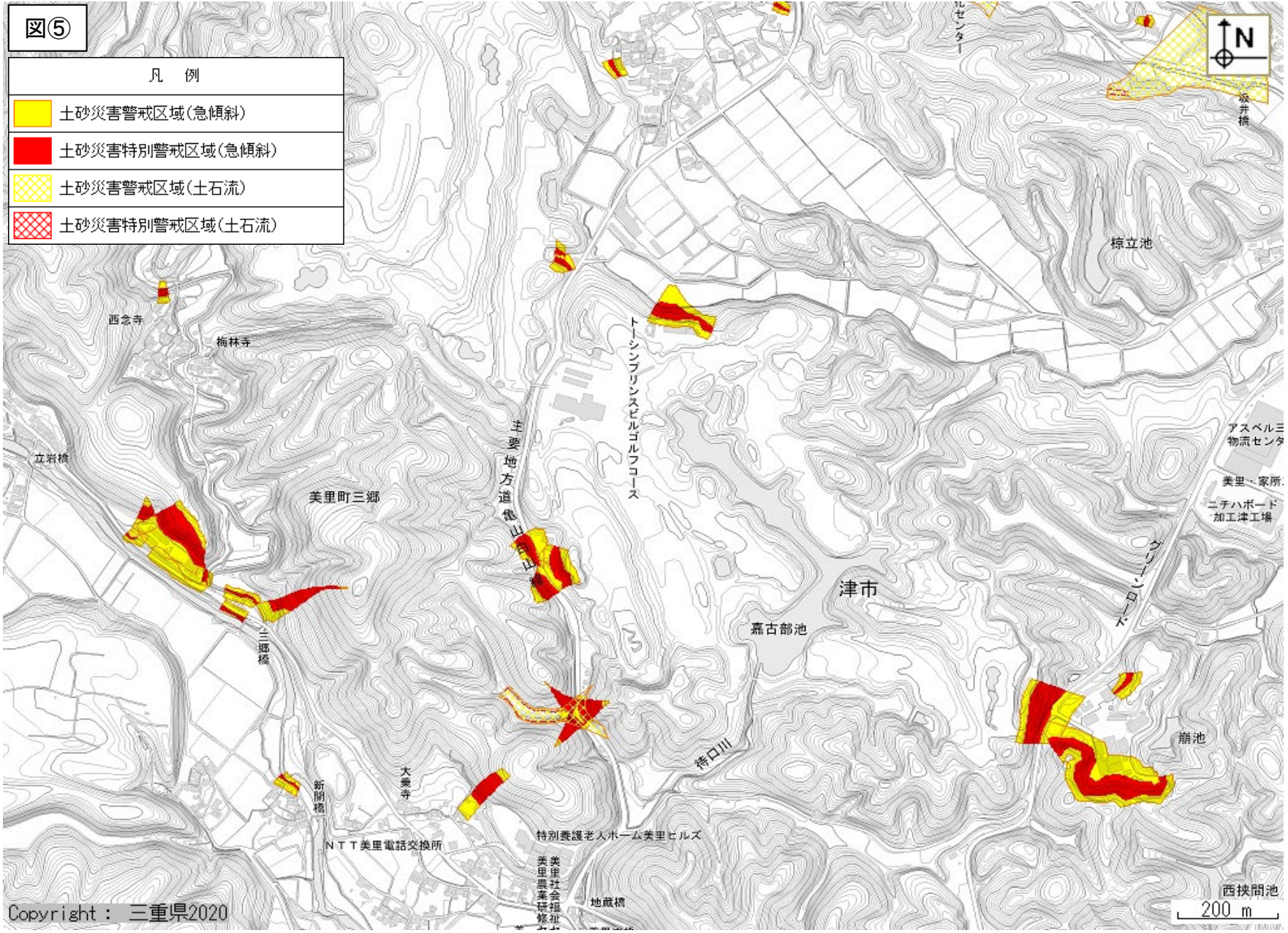
図④



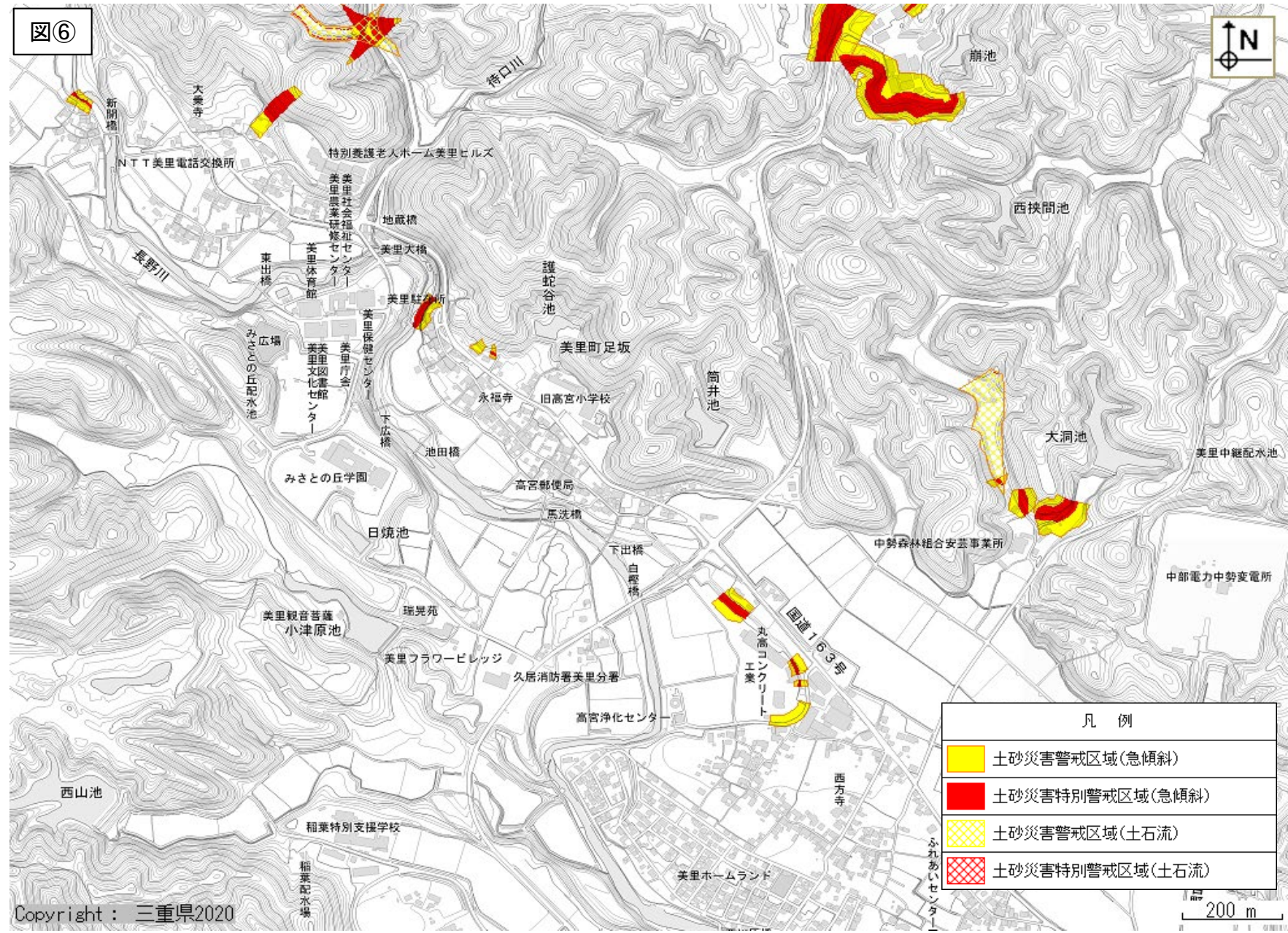






図⑤

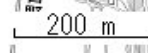
凡 例	
	土砂災害警戒区域(急傾斜)
	土砂災害特別警戒区域(急傾斜)
	土砂災害警戒区域(土石流)
	土砂災害特別警戒区域(土石流)



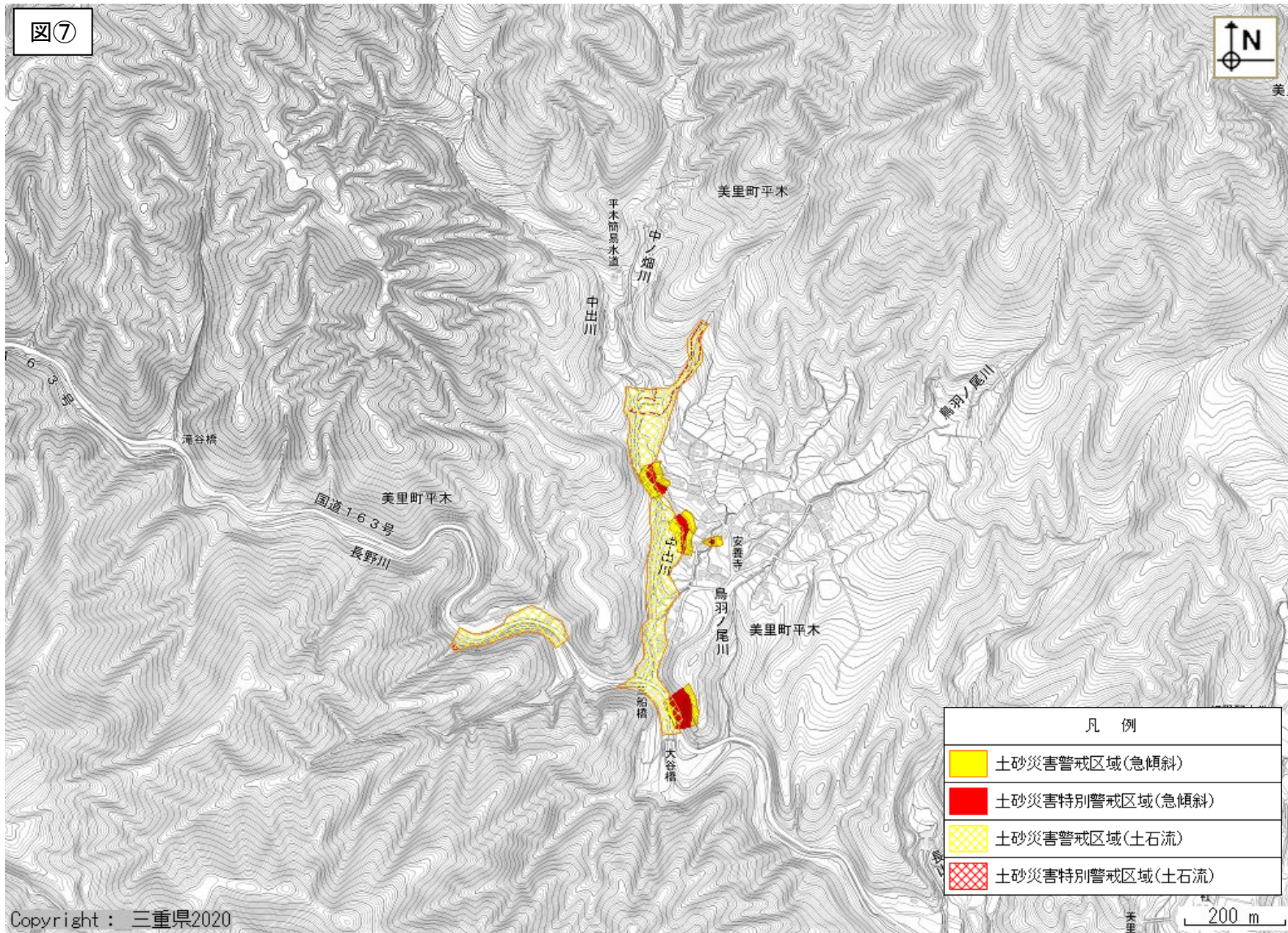
図⑥



凡 例	
	土砂災害警戒区域(急傾斜)
	土砂災害特別警戒区域(急傾斜)
	土砂災害警戒区域(土石流)
	土砂災害特別警戒区域(土石流)

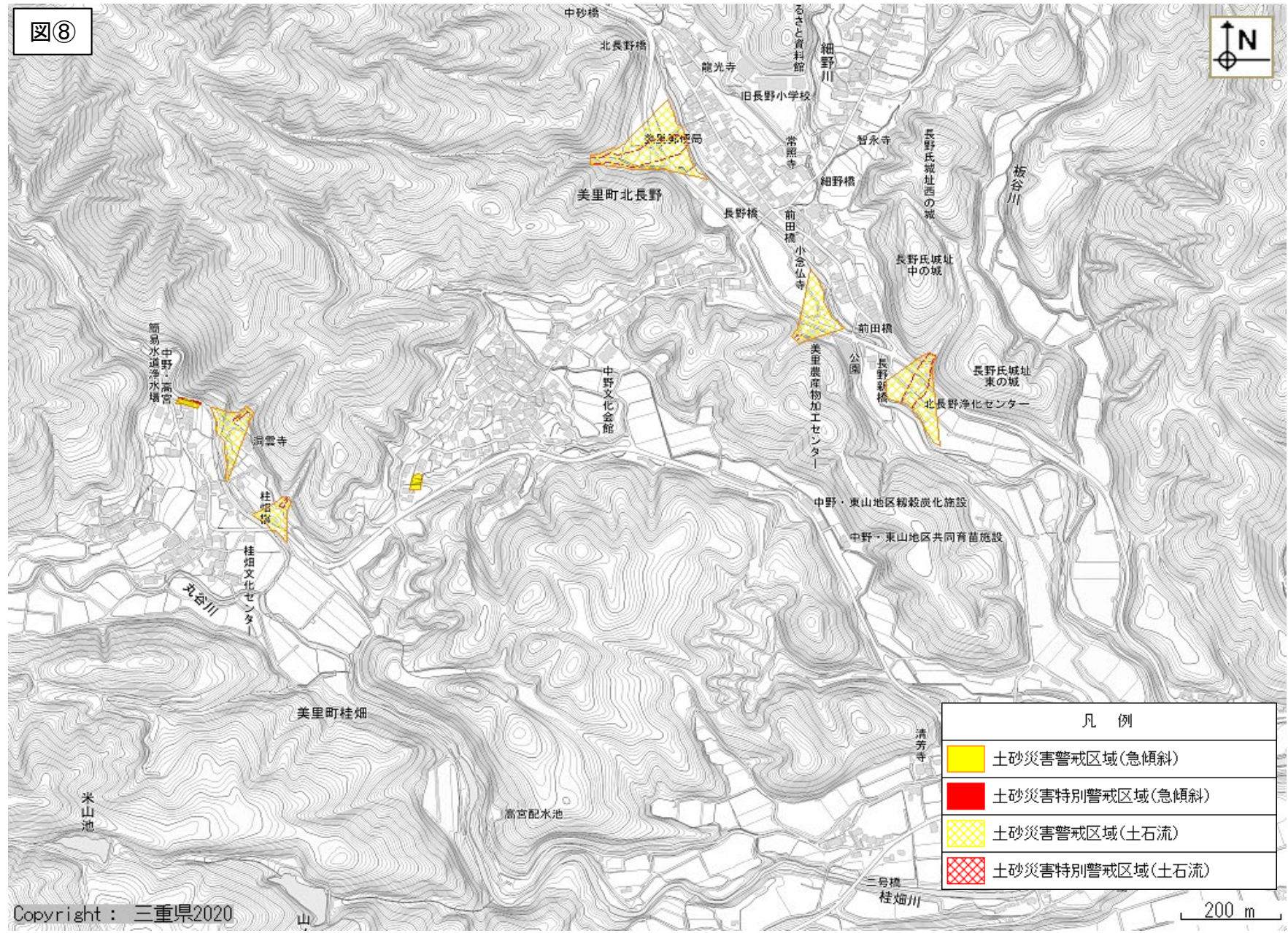


図⑦



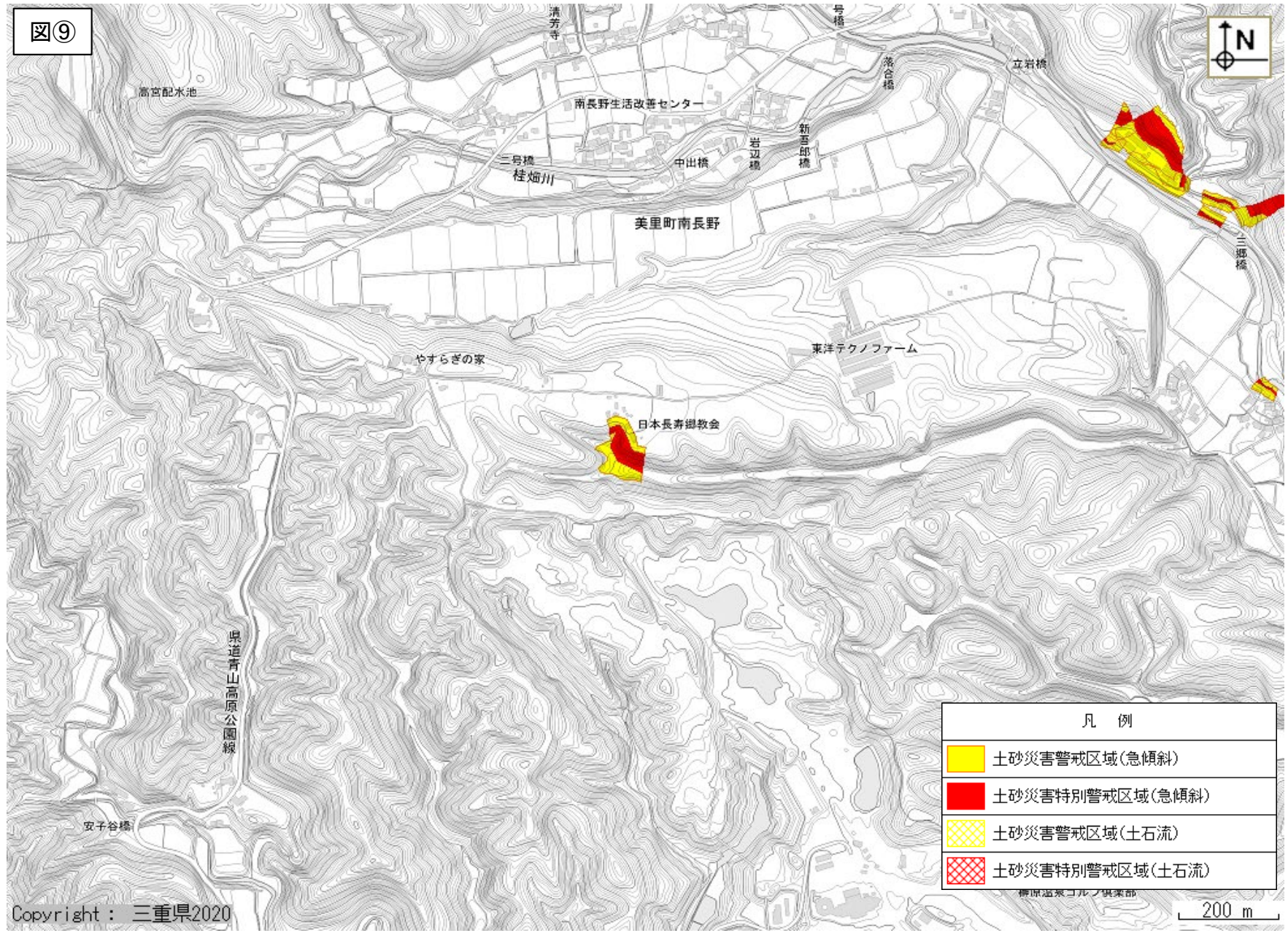
凡例	
	土砂災害警戒区域(急傾斜)
	土砂災害特別警戒区域(急傾斜)
	土砂災害警戒区域(土石流)
	土砂災害特別警戒区域(土石流)

図⑧



凡例	
	土砂災害警戒区域(急傾斜)
	土砂災害特別警戒区域(急傾斜)
	土砂災害警戒区域(土石流)
	土砂災害特別警戒区域(土石流)

図⑨



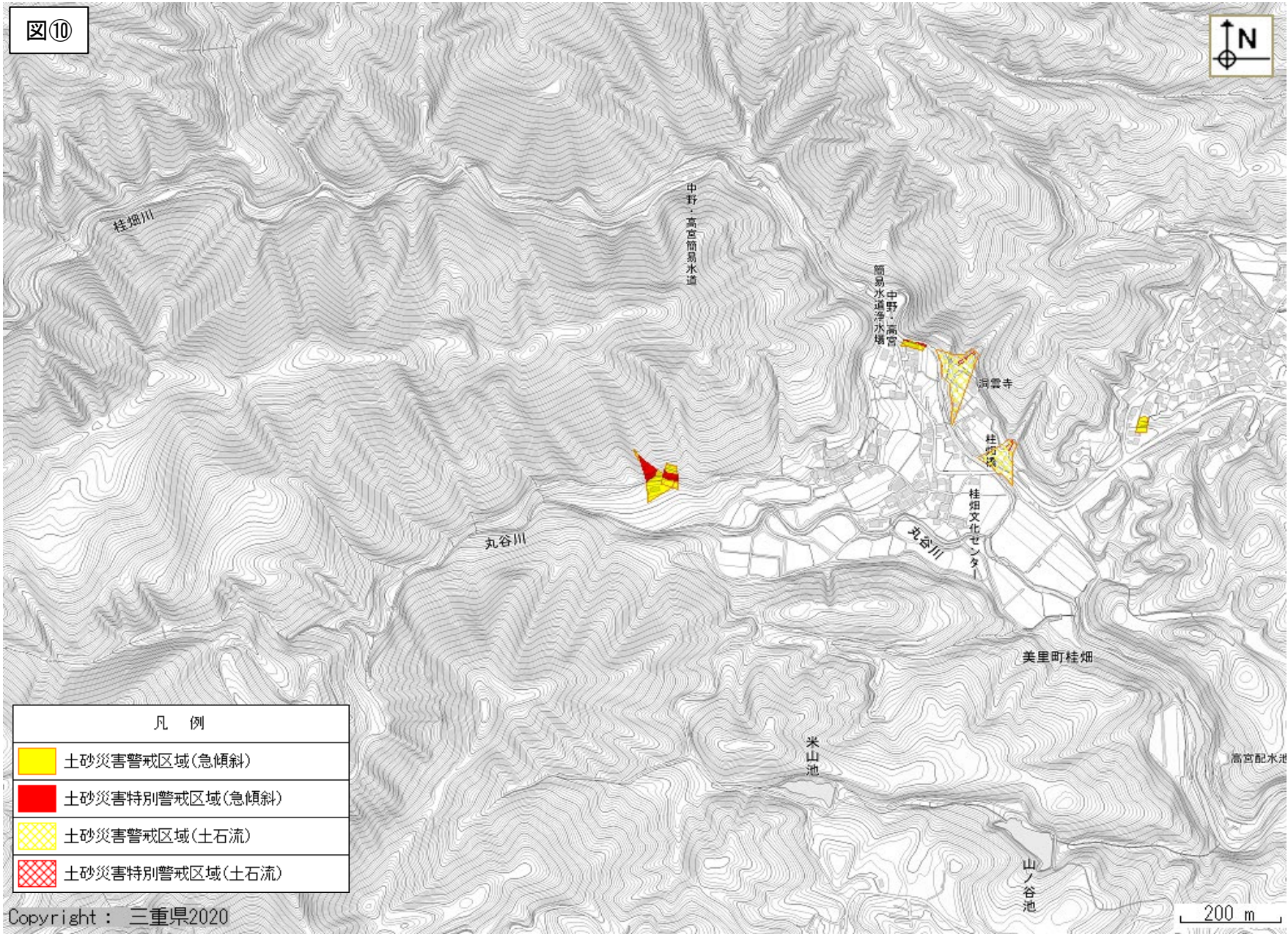
凡 例	
	土砂災害警戒区域(急傾斜)
	土砂災害特別警戒区域(急傾斜)
	土砂災害警戒区域(土石流)
	土砂災害特別警戒区域(土石流)

標高調査：国土院

Copyright : 三重県2020

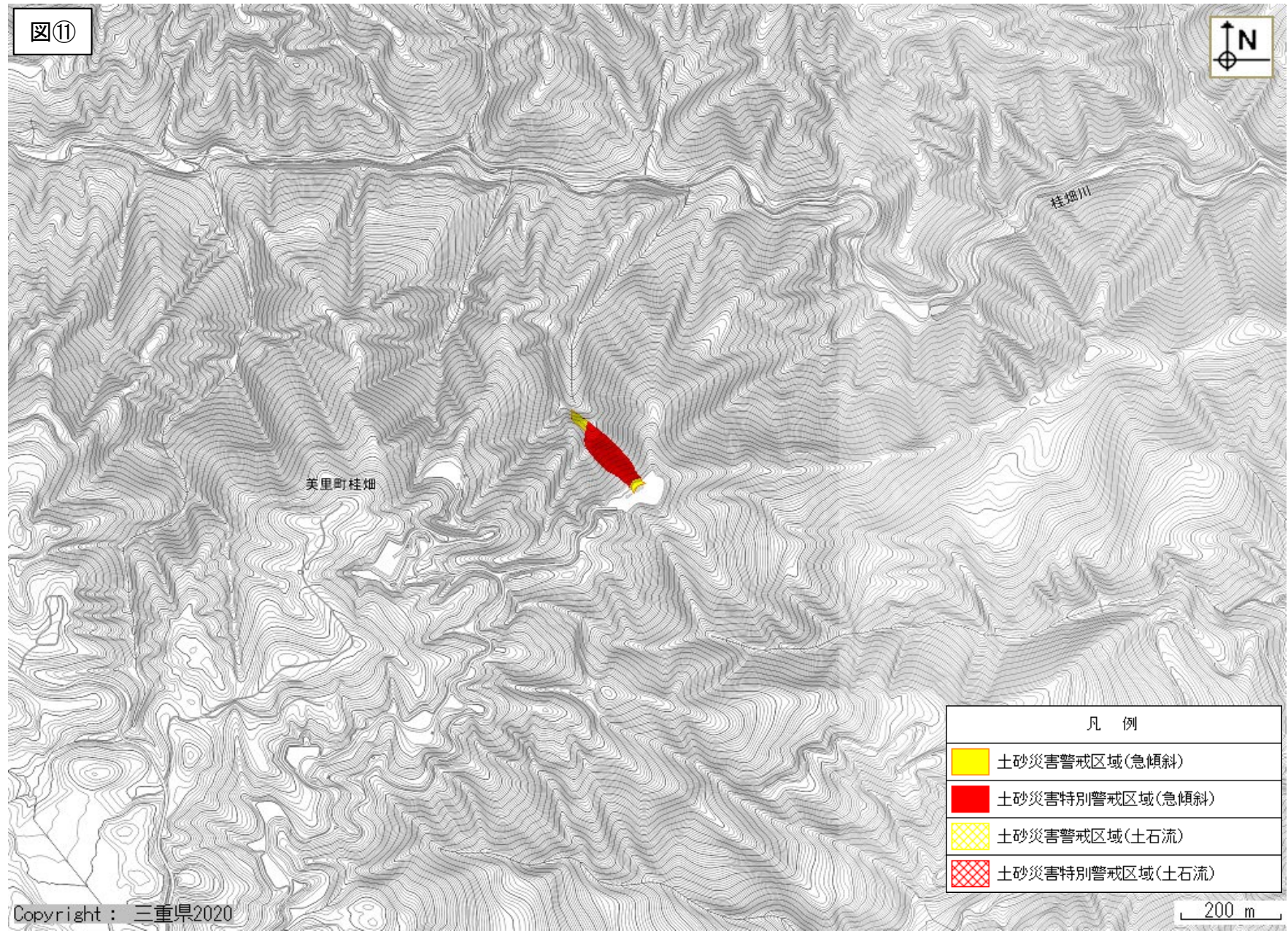
200 m

図10



凡例	
	土砂災害警戒区域(急傾斜)
	土砂災害特別警戒区域(急傾斜)
	土砂災害警戒区域(土石流)
	土砂災害特別警戒区域(土石流)

図⑪



美里町桂畑

桂畑川

凡 例	
	土砂災害警戒区域(急傾斜)
	土砂災害特別警戒区域(急傾斜)
	土砂災害警戒区域(土石流)
	土砂災害特別警戒区域(土石流)

Copyright : 三重県2020

200 m

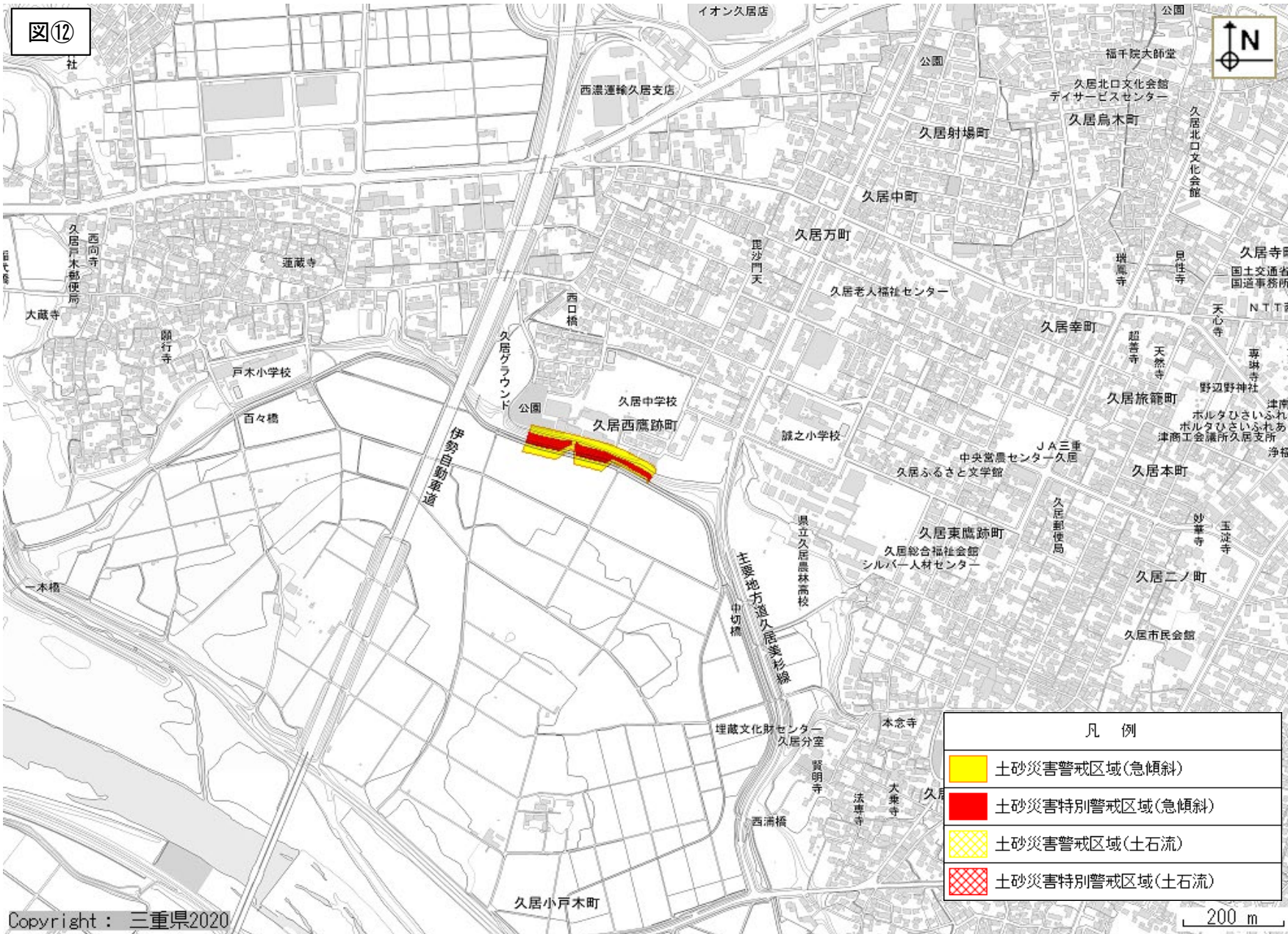






図12



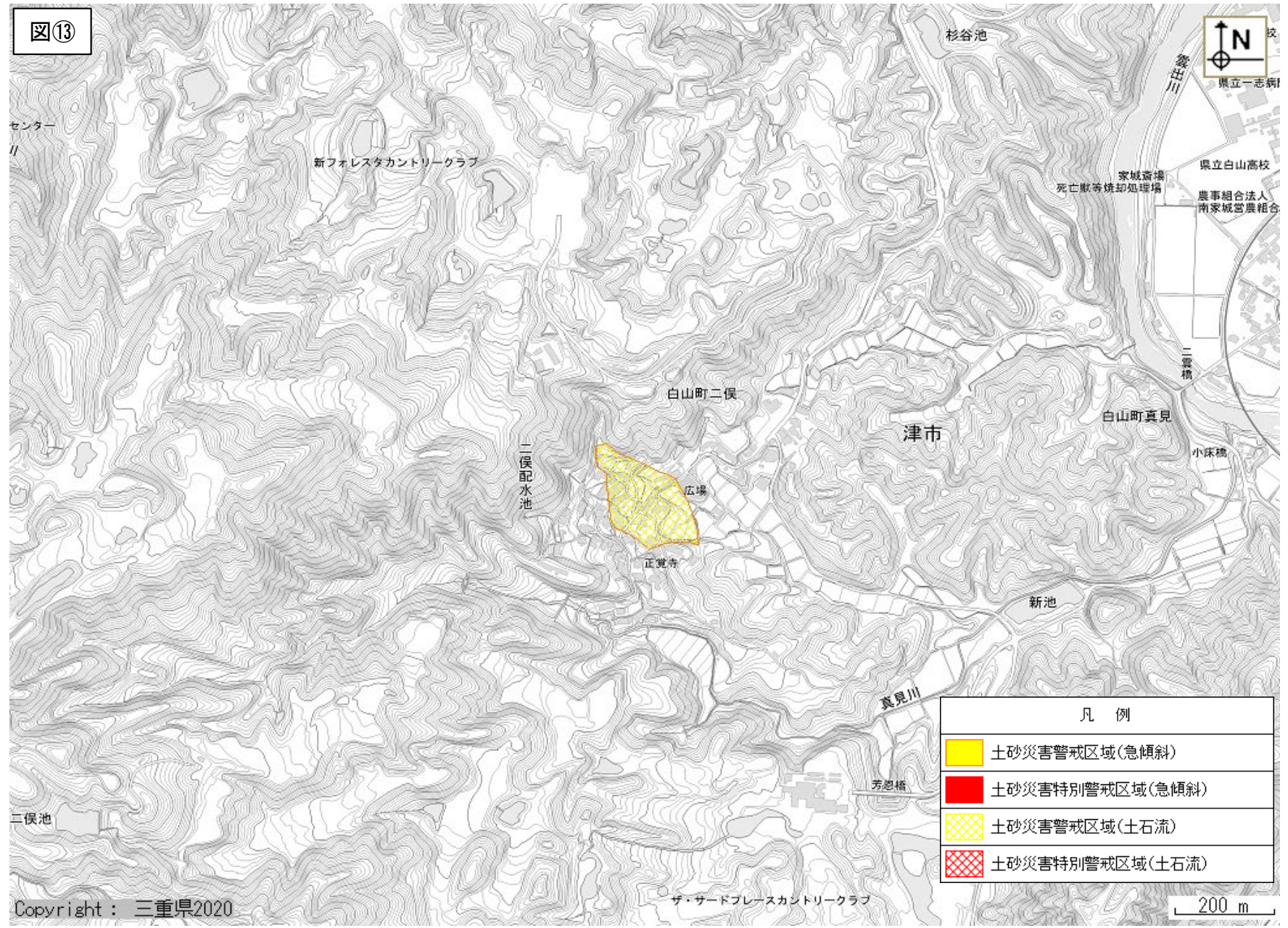
凡例	
	土砂災害警戒区域(急傾斜)
	土砂災害特別警戒区域(急傾斜)
	土砂災害警戒区域(土石流)
	土砂災害特別警戒区域(土石流)

Copyright : 三重県2020

200 m



図13







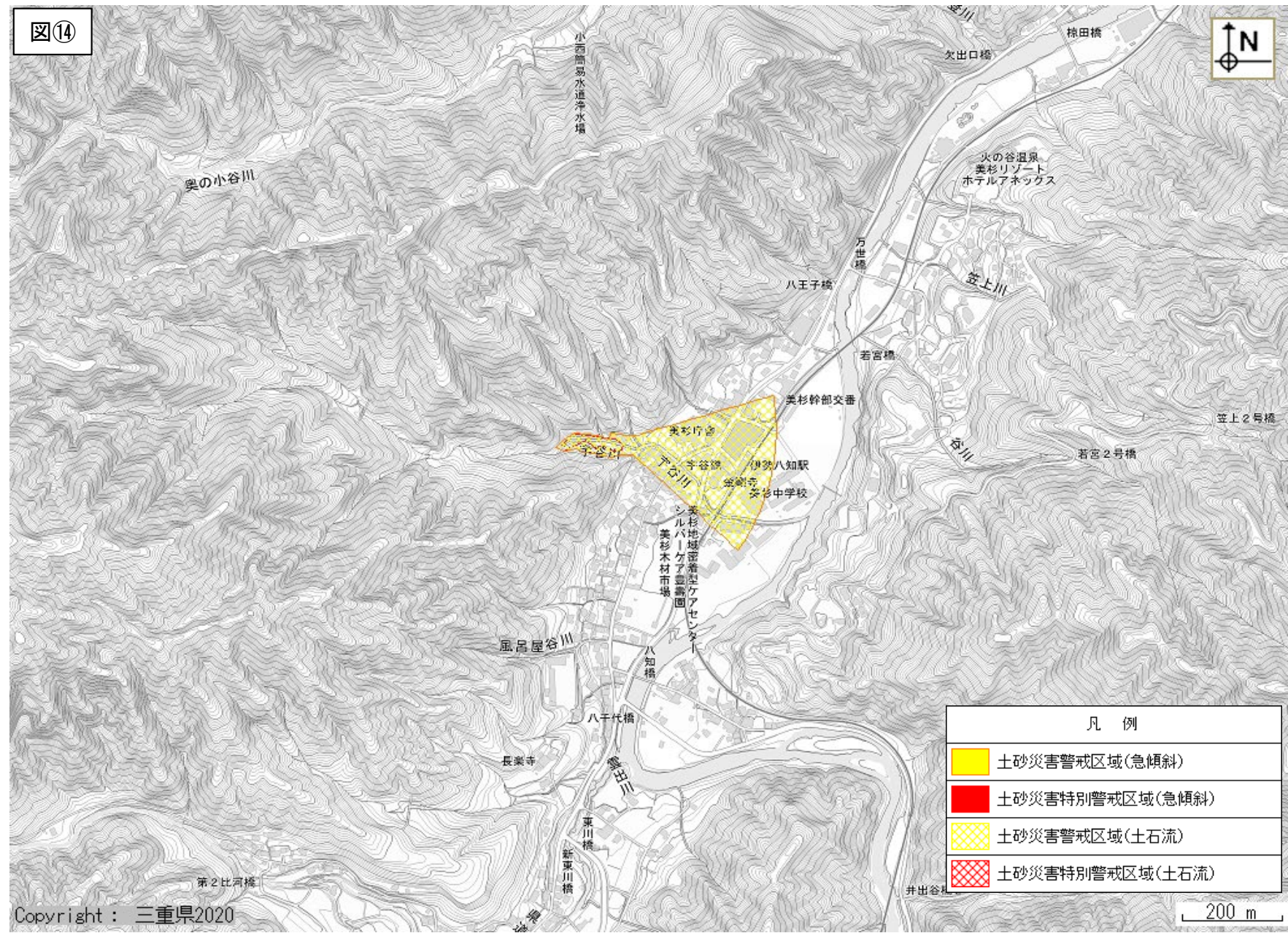
凡 例	
	土砂災害警戒区域(急傾斜)
	土砂災害特別警戒区域(急傾斜)
	土砂災害警戒区域(土石流)
	土砂災害特別警戒区域(土石流)

図14



凡 例	
<span style="display:inline-block; width:15px; height:15px; background-color:yellow;"></span>	土砂災害警戒区域(急傾斜)
<span style="display:inline-block; width:15px; height:15px; background-color:red;"></span>	土砂災害特別警戒区域(急傾斜)
<span style="display:inline-block; width:15px; height:15px; background: repeating-linear-gradient(45deg, transparent, transparent 2px, black 2px, black 4px);"></span>	土砂災害警戒区域(土石流)
<span style="display:inline-block; width:15px; height:15px; background: repeating-linear-gradient(45deg, transparent, transparent 2px, red 2px, red 4px);"></span>	土砂災害特別警戒区域(土石流)

200 m